

SINOCOLOR

A3 UV FLATBED PRINTER UF-300C

USER'S GUIDE



非常感谢您购买此产品。

- 为确保正确和安全使用，并充分了解本产品的性能，请务必仔细阅读本手册完全存放在安全的地方。

- 禁止未经授权复制或转让本手册的全部或部分内容。
- 本手册的内容和本产品的规格如有变更，恕不另行通知。
- 本手册和产品已尽可能准备和测试。如果您发现任何印刷错误或错误，请通知我们。

- Sino Color Corp.对因使用此产品而可能发生的任何直接或间接损失或损害不承担任何责任产品，无论本产品是否有任何失败。

- Sino Color Corp.对任何可能发生的任何直接或间接损失或损害不承担任何责任
使用此产品制作的文章。

Thanks for your support to Sinocolor Printer.

- Be sure to read carefully to ensure proper and safe use and to fully understand the performance of this product. This manual is completely stored in a safe place.
 - Unauthorized reproduction or transfer of all or part of this manual is prohibited.
 - The contents of this manual and the specifications of this product are subject to change without notice.
 - This manual and product have been prepared and tested as much as possible. If you find any typographical errors, please inform us.
 - Sinocolor Group. assumes no responsibility for any direct or indirect loss or damage which may occur with respect to any article made using this product.
-
-

Important Notes on Handling and Use

This machine is a precision device. To ensure the full performance of this machine, be sure to observe the following important points. Failure to observe them may not only result in loss of performance, but may also cause malfunction or breakdown.

Machine

您可以从以下网站下载获取机器信息

You can know more about printer from below website.

<https://www.SinoColorDG.com/>

Installation Requirement (Please read carefully)

Install in a quiet, stable location offering good operating conditions. An unsuitable location can cause accident, fire, faulty operation, or breakdown.

Install the machine in a location that is level, stable, and able to bear the weight of the machine.

The total weight of the machine may reach 80kg. Installation in an unsuitable location may cause a major accident, including tip over, fall, or collapse.

Install in a clean, brightly lit location.

Conduct operations in a clean, brightly lit location. Working in a location that is dark or cluttered may lead to an accident, such as becoming caught in the machine as the result of an inadvertent stumble.

Position so that the power plug is within immediate reach at all times.

This is to enable quick disconnection of the power plug in the event of an emergency. Install the machine next to an electrical outlet. Also, provide enough empty space to allow immediate access to the electrical outlet.

Ensure adequate ventilation for the work area.

Failing to perform ventilation may result in a health hazard or danger of combustion due to ink fumes.

Temperature and Humidity

Keep the room temperature between 20-30C, humidity 40-60%. Air conditioner and humidifier may be required. Keep a distance from strong radiation field. **The floor/working table must be level.**

Maintain the specified temperature and humidity even when the machine is not in use. If temperatures are too high or too low, it may cause malfunction.

Electrical requirement

Electrical requirement writes on a metal tag on the back of the printer. Find it to confirm if your printer supports 220V or 110V. A transformer is needed if your country standard is different. **The printer must be well grounded.**

UPS and voltage stabilizer is highly recommended. (**Not included in printer price. Need to buy separately**)

Computer

Computer requirement

Basic requirement: CPU: 2.5 GHz

or higher Memory: 2GB or higher

Hard Disk: 200GB or higher

Operating system: Microsoft Windows XP / Windows 7 Ultimate Edition / Windows 10

Hard Disk: 500GB or higher (NTFS format)
Operating system: Microsoft Windows 7 Ultimate Edition

NOTICE: Suggest user format your hard disk into 2 partitions (NTFS). The first partition is used for installing OS and other software, the second partition is used to save pictures and work files.

Ink

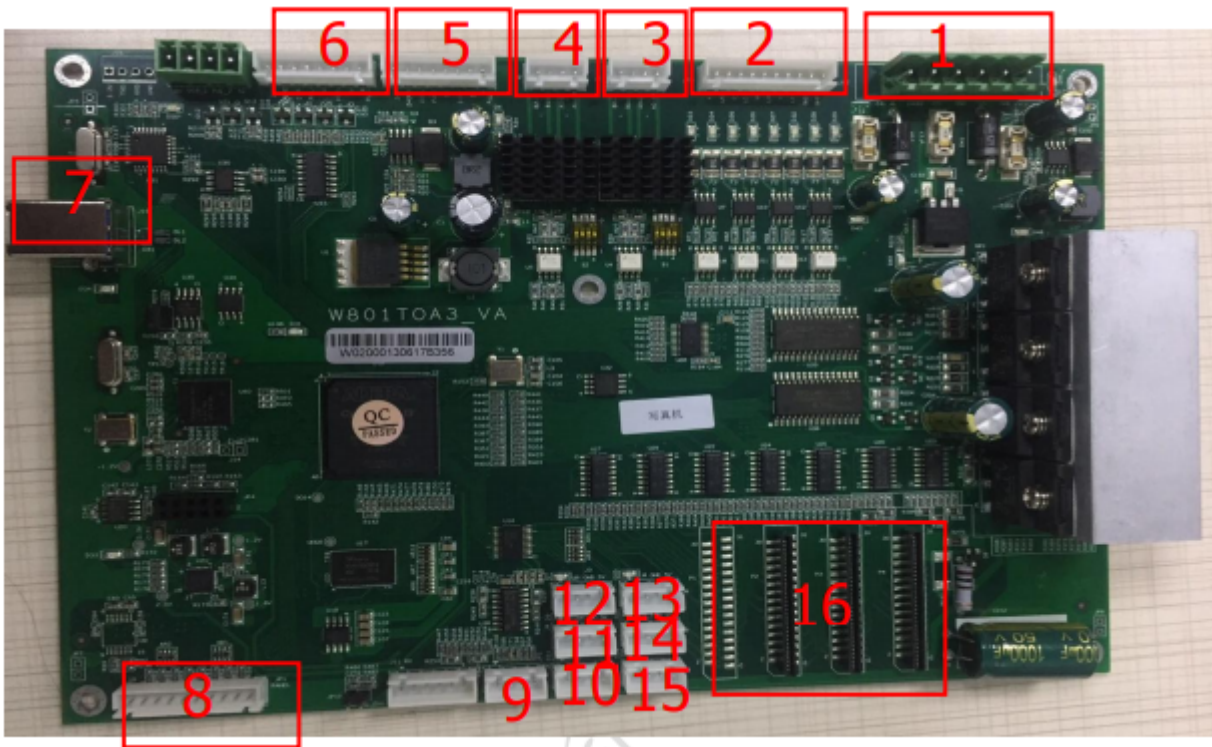
Suggest to use original ink from Sinocolor. Had tested carefully before supplying to customer. High quality. And most friendly for printhead. Other ink is not tested, may cause problem of printhead clogging, color difference, strong smell.

Storage: Store unopened in a well-ventilated location at a temperature of 0 to 40°C (32 to 104°F)

一 机器部件说明 Description of printer structure

1.1 板卡说明 Board Instruction

主板 Main Board



如主板外观图所示 The Main Board is as shown in the above photo

1: 主板电源, 需接 12V、24V、42V (顺序按照板卡显示连接), 电流要求 5A 以上;

Mainboard power supply, needs to connect 12V, 24V, 42V (should be connected as indicated on the board), current is required to be 5A or more

2: 吸墨泵、UV 灯接口, 输出为 24V;

Ink pump, UV lamp interface, the output is 24V;

3: Moto 0: 墨栈升降电机接口 capping station lifting motor interface

4: Moto 1 刮片电机接口; Wiper Motor interface

5: X 小车电机信号接口 (DIR+、DIR-、PUL+、PUL-); X motor signal connector (DIR+、DIR-、PUL+、PUL-)

6: Y 走料电机信号接口 (DIR+、DIR-、PUL+、PUL-); Y motor signal connector = (DIR+、DIR-、PUL+、PUL-)

7: USB 接口 (建议使用2.0); USD connector (suggest use 2.0)

8: 按键控制板或者触摸屏接口; Touch Screen interface

9: 光栅解码器接口; Encoder reader interface

10: 刮片电机限位感应器接口; wiper motor limit sensor interface

11: 墨栈升降电机限位感应器接口; capping station lifting motor limit sensor interface

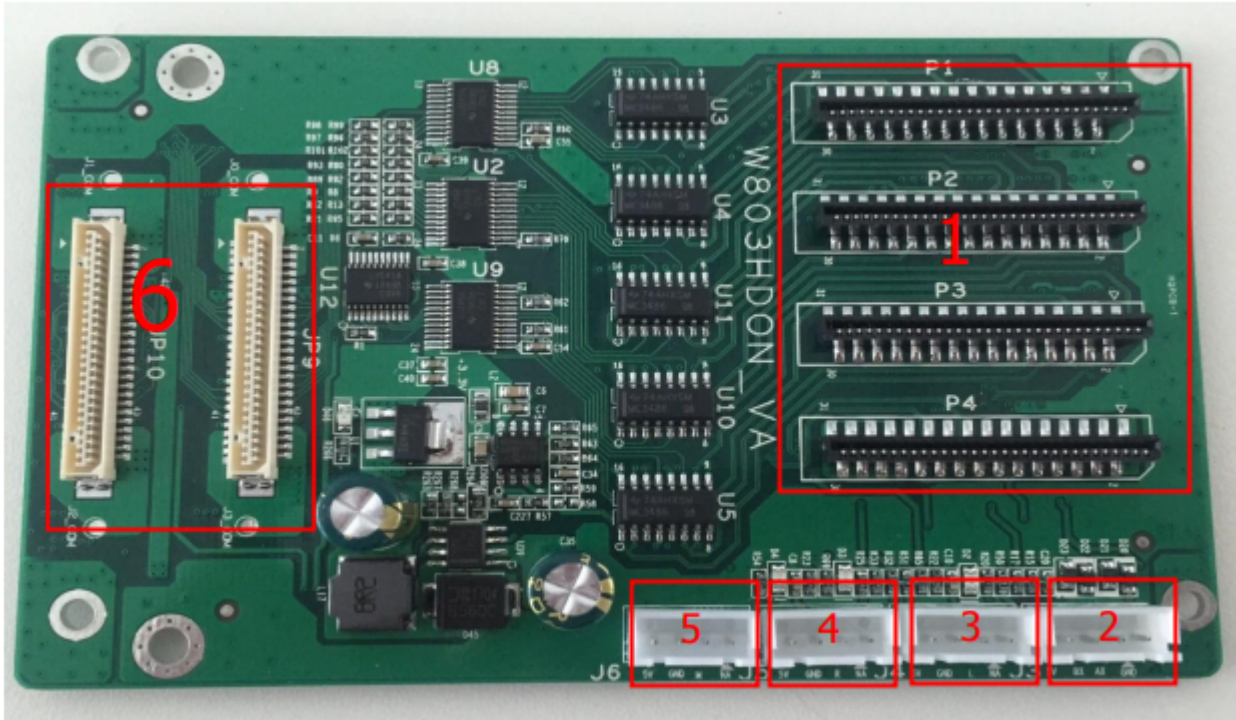
12: Z轴上限位; Z axis upper limit

13: Z轴下限位; Z axis lower limit

14: 左限位接口; Left limit connector

board with the 31P flat data cable, pay attention to the corresponding relationship (P2-P2, P3-P3, P4-P4).

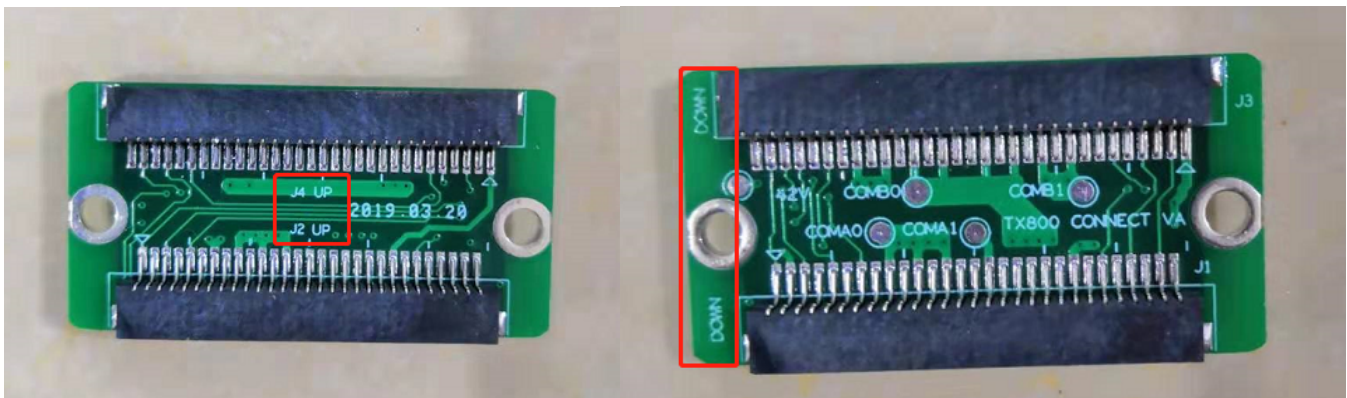
喷头板 Printhead Board



如图上示：

- 1: 通过 31P 扁平线与主板连接，（单头只需要接 P2、P3、P4）； Connected mainboard through 31P flat data cable (single head only need to connect P2, P3, P4)
- 2: 光栅解码器接口，注意板上标注显示（5V、BX、AX、GED）； Encoder reader interface. Please note, there is mark on the board (5V, BX, AX, GED)
- 3: 左限位感应器接口（5V、GED、L）； Left limit sensor interface (5V, GED, L)
- 4: 右限位感应器接口（5V、GED、R）； Right limit sensor interface (5V, GED, R)
- 5: 防撞端口； anti-collision port
- 6: 喷头小板接口（DX8喷头需要转接） Printhead convert card interface (DX8 head needs to be converted)

转接板 Convert card



注：请注意小转接板上面的“UP”，“DOWN”；连接到对应的喷头板还有喷头。

Note: Please note there is mark of “UP” and “DOWN” on the convert card. Connect to the corresponding printhead board and printhead.

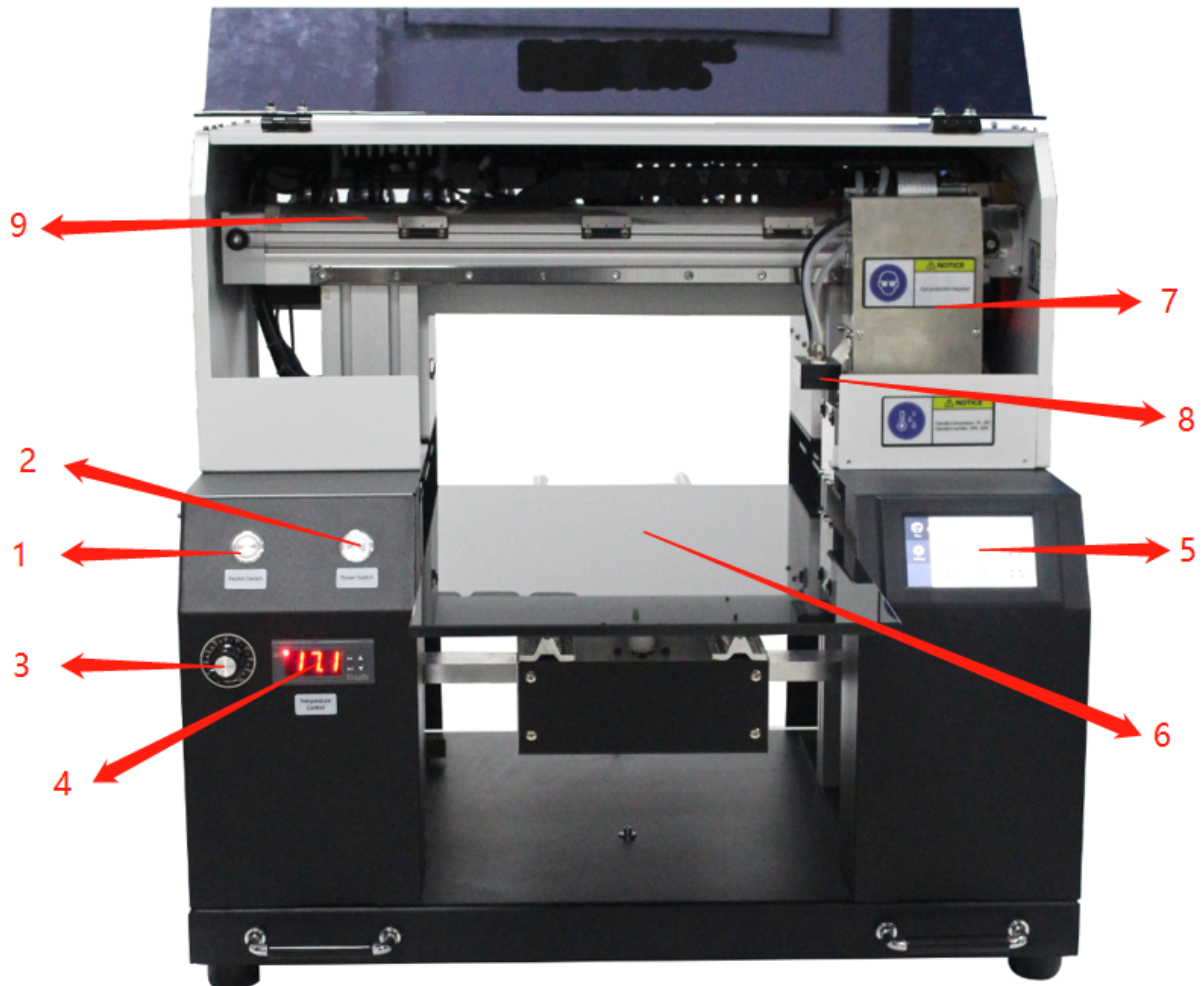
Please pay big attention on this printhead data cable connection. Wrong connection may burn the printhead easily.

Machine Frame

安装完打印机后，我们现在需要进行对打印机的部分部件的了解。

After install the printer, we need to know the structure of the printer.

Front



1: UV灯开关; UV lamp switch

2: 电源开关; Printer Power switch

3: UV灯功率调节旋钮 (旋转至30-60) ; UV lamp strength adjust knob (rotate to 30-60);

4: UV水箱水温显示屏; Display to show the temperature of water in the UV Water box.

5: 触控屏; Touch screen

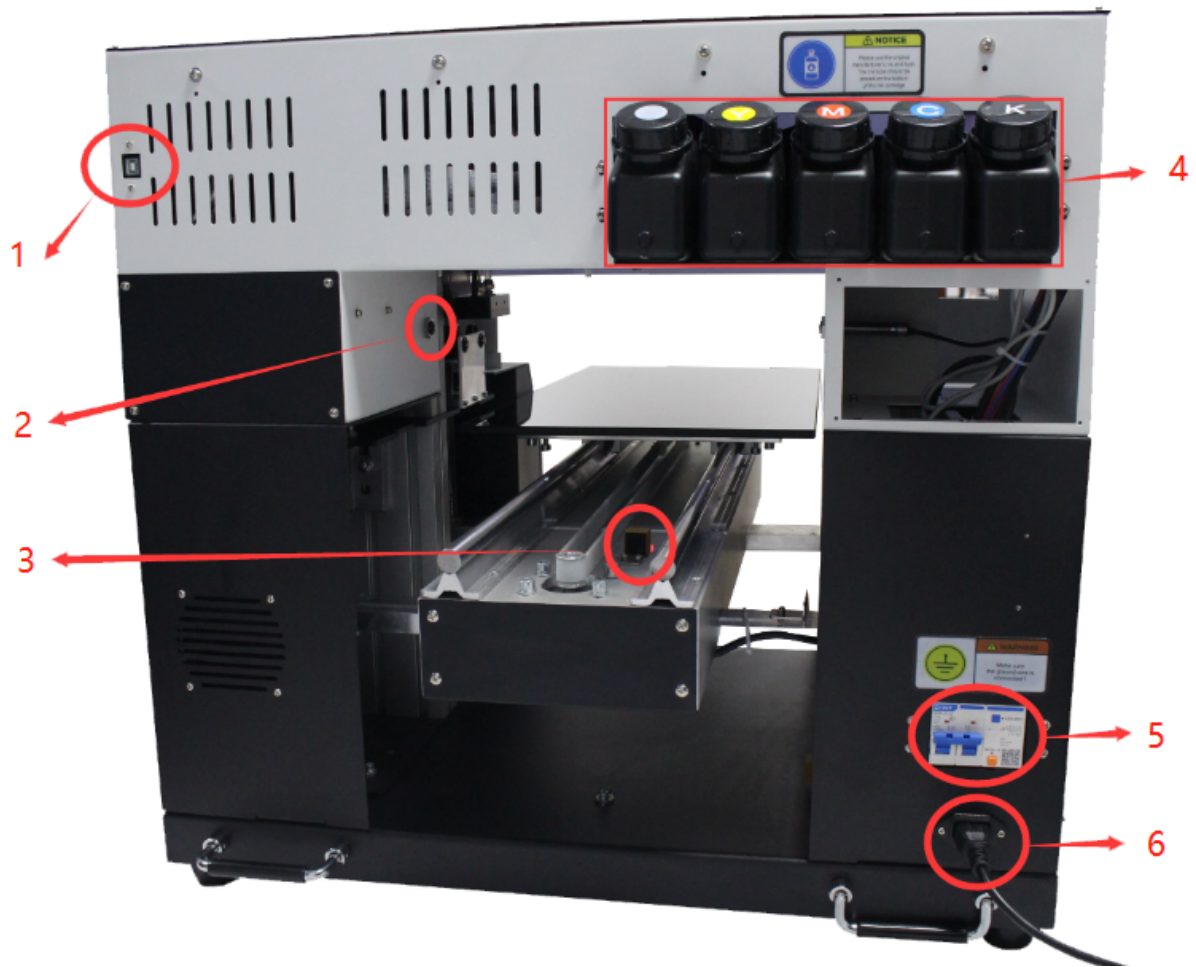
6: 平台; Printer Platform

7: 小车; Carriage

8: UV灯; UV lamp

9: 光栅读条。Encoder reader

Rear



1: USB接口; USB interface

2: Z上限位感应器; Z upper limit sensor

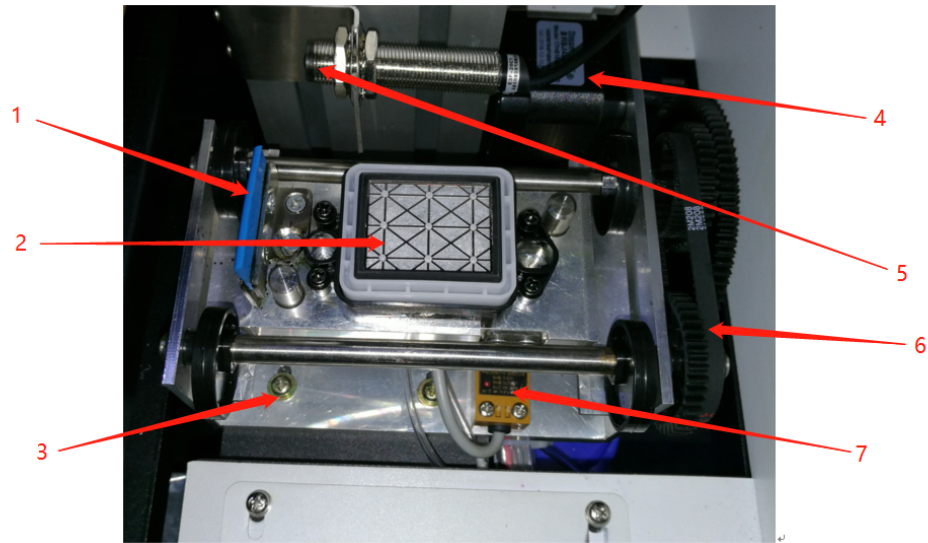
3: Y原点限位开关; Y base point limit sensor

4: 墨盒; Ink bottle

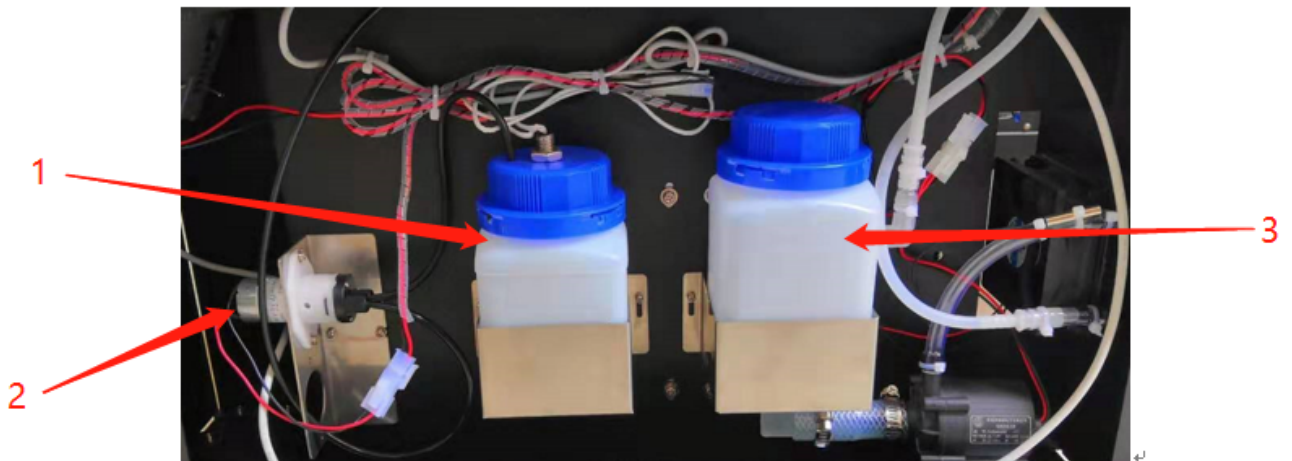
5: 总开关; The main power

6: 电源接口 (注意电压值110V或者220V) Power interface (note: the voltage should be 110V or 220V)

墨栈: Capping Station



- 1: 刮片; Wiper
- 2: 墨托; Capping unit
- 3: 墨栈固定螺丝; Fixing screw of Capping station
- 4: 墨栈电机; capping station motor
- 5: Z上限位感应开关; Z upper limit sensor switch
- 6: 墨栈皮带及齿轮; capping station belt and gear
- 7: 墨栈限位开关。Capping station limit sensor



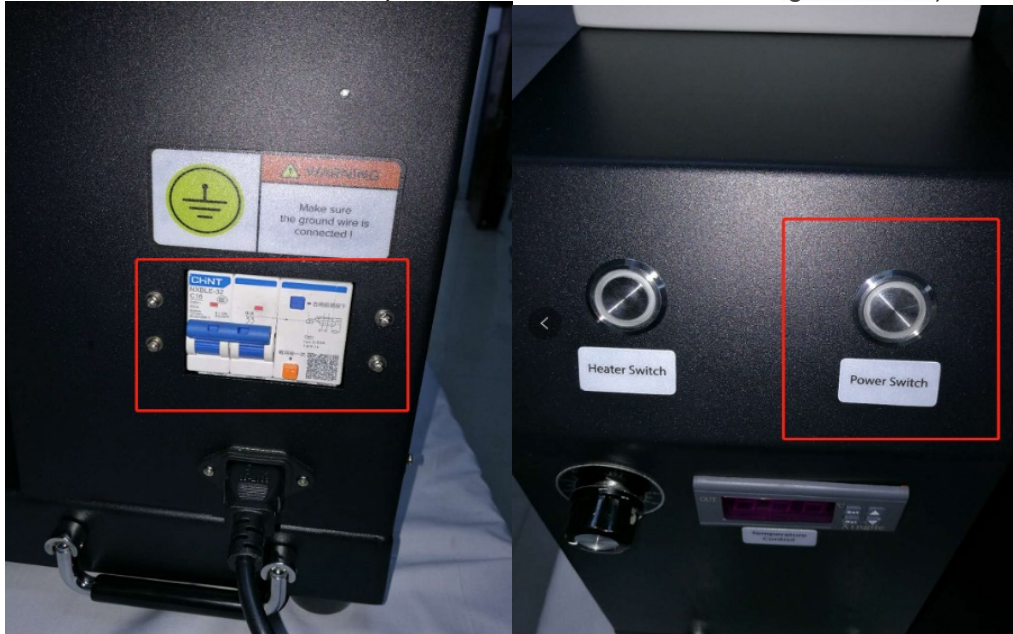
- 1: 废墨瓶 (注意需要定时清理, 防止溢出) Waste ink bottle (Note: need to clean regularly to prevent overflow)
- 2: 吸墨电机 Ink pump motor
- 3: UV水箱 (需要每月更换一次纯净水) UV water tank (need to change pure water once a month)

启动机器和连接电脑（注意★） Start the machine and connect to the computer（Note）

准备启动机器 Prepare to start the machine

插上电源线并打开打印机，请记住打开主电源开关和紧急开关（需要确保机器主电源插座有地线连接）。

Plug in the power cable and turn on the printer, remember to turn on both main power switch and the emergency switch (you need to make sure the machine's main power socket is connected with ground wire)



检查机器运动：首先墨栈下降，然后小车的左移动一段距离，接着小车向右移动，之后向左移动一点，最后墨栈上升。

（注意喷头电缆线不要连接，小车盖先不要安装，如遇动作问题请联系客服）

Check whether the machine motion is correct: first the capping unit drops, then carriage moves to the left a little bit, th carriage moves to the right, then moves to the left a little, and finally the capping station rises.

(Note: Don't connect the printhead cable and the cover of the carriage right now.

And if there is anything wrong with the motion, please contact technician)

Technician: Mr.Ma

Email: support@sinocolor.com.cn

Whatsapp /Wechat ID:+86 189 39965808

Skype: sanyi_support

二，墨水安装 Ink installation

加注墨水进入大墨盒（添加2/3位置即可），注意颜色顺序，如下图所示。

Fill the ink into the big ink cartridge (add to 2 / 3 of ink cartridge). Please pay attention on the color sequence, See below photo:



当墨盒里墨水液位过低时，机器会发出报警声，并亮起红灯，此时应该添加墨水到墨盒里。液位报警灯位于机器上方需对应安装墨水：

When the ink level in the ink cartridge is too low, the machine will give an alarm to remind you. And the light will be Then need to add ink into the ink cartridge.

The alarm lights are located above the machine, and needs. Each one indicate one color. Need to fill in ink accordir to the light.



三， 电脑连接 **Computer connection**



注意 推荐要求：CPU: 3.5 GHz或更高
内存：4GB或更高
硬盘：500GB或更高（NTFS格式）
操作系统：Microsoft Windows 7/10 Ultimate Edition

Note Recommended requirements: CPU: 3.5 GHz or higher
Memory: 4GB or higher
Hard disk: 500GB or higher (NTFS format)
Operating System: Microsoft Windows 7/10 Ultimate Edition



注意 建议用户：将硬盘格式化为2个分区（NTFS）。第一个分区用于安装OS系统和其他必要安装在此盘的软件
第二个分区用于保存软件，图片和工作文件。

Note: Users are advised to format the hard disk as 2 partitions (NTFS). The first partition is used to install the OS system and other software that is necessary to install on this disk, and the second partition is used to save software, images and working files.

安装**USB驱动程序**： **Install the USB driver:**

使用此USB数据线连接电脑和机器USB接口。（保持机器开机状态）

Use this USB cable to connect the computer and the USB Port of machine. **(Keep the machine to be powered on)**



用电脑打开我们公司配发的U盘，同时拷贝所有文件在电脑硬盘中（请勿拷贝在系统盘，如果只有一个盘请忽略。）请妥善保存此U盘备用。（注意：U盘内容会因不同机器内容有所不同）

Check the U Disk we sent together with your machine. Copy all the document into your PC. (Don't copy it to the system disk if there is only one disk.) Please keep the U Disk safe for backup. (Note: The content of the U Disk will be different for different machines.)

disk. While if your PC has only one disk, please ignore).

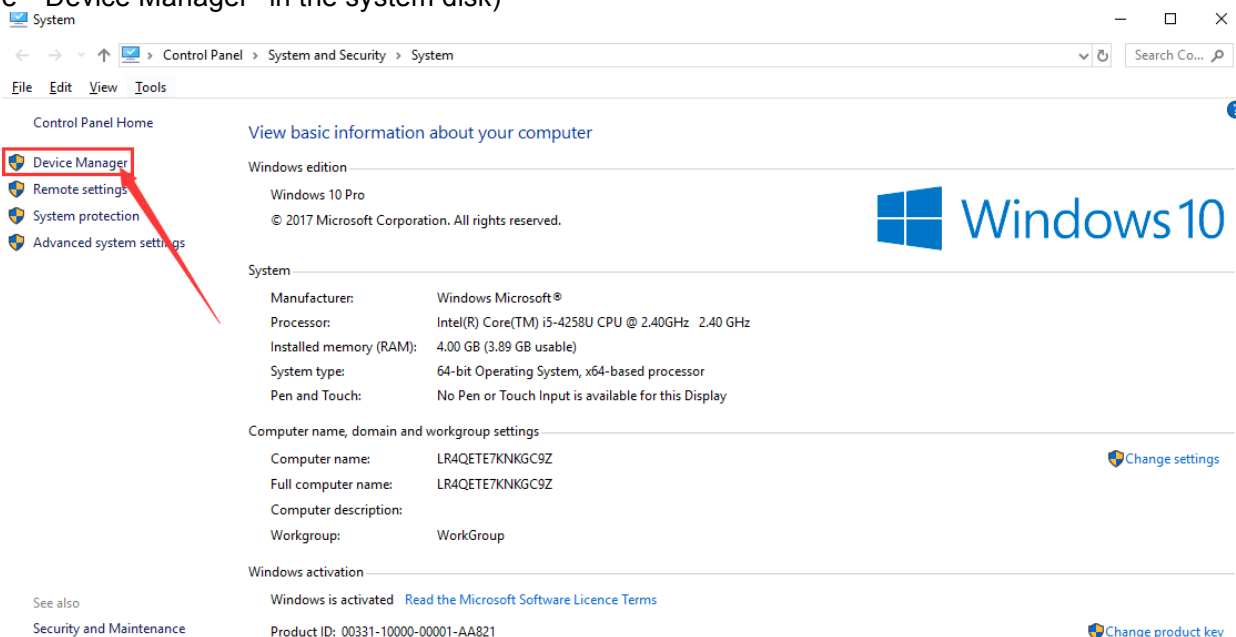
The USB disk need to be properly kept. (The document for different model of printer will be different. So please don't n them)



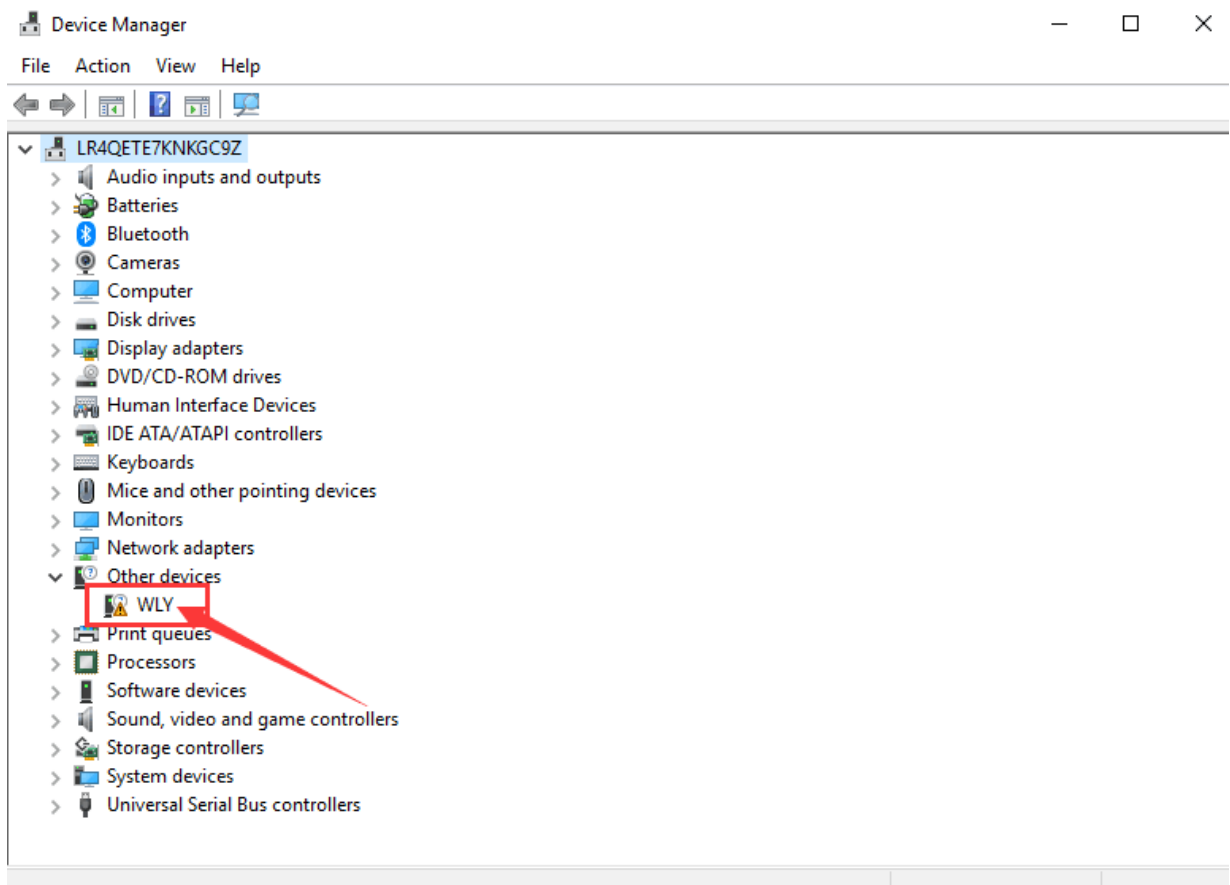
| File Name | Date/Time | Type | Size |
|---|-----------------|-----------------|------------|
| 5.3c0 | 2019/7/29 15:48 | 文件夹 | |
| Customers Tool | 2019/7/29 15:48 | 文件夹 | |
| SinoColor Printconsole of 4color for DX8 | 2019/7/29 15:48 | 文件夹 | |
| SinoColor-4 color maintop driver for NEW720 | 2019/7/29 15:48 | 文件夹 | |
| Software Installation Driver for 3.0 | 2019/5/8 11:29 | 文件夹 | |
| System Must Running Tool | 2019/7/29 15:48 | 文件夹 | |
| 5.3c0.zip | 2019/5/8 11:30 | 压缩(zipped)文件... | 197,881 KB |
| Customers Tool.zip | 2019/5/8 11:31 | 压缩(zipped)文件... | 118 KB |
| SinoColor Printconsole of 4color for DX8.zip | 2019/5/8 11:32 | 压缩(zipped)文件... | 32,974 KB |
| SinoColor-4 color maintop driver for NEW720.zip | 2019/5/8 11:32 | 压缩(zipped)文件... | 4,107 KB |
| Software Installation Driver for 3.0.zip | 2019/5/8 11:32 | 压缩(zipped)文件... | 19,463 KB |
| System Must Running Tool.zip | 2019/5/8 11:33 | 压缩(zipped)文件... | 8,328 KB |

打开计算机的系统属性，选择“Device Manager”：

Keep the printer powered on. Check the computer system property (No matter you are using Win7 or Win 10. Only ne to open the “Device Manager” in the system disk)



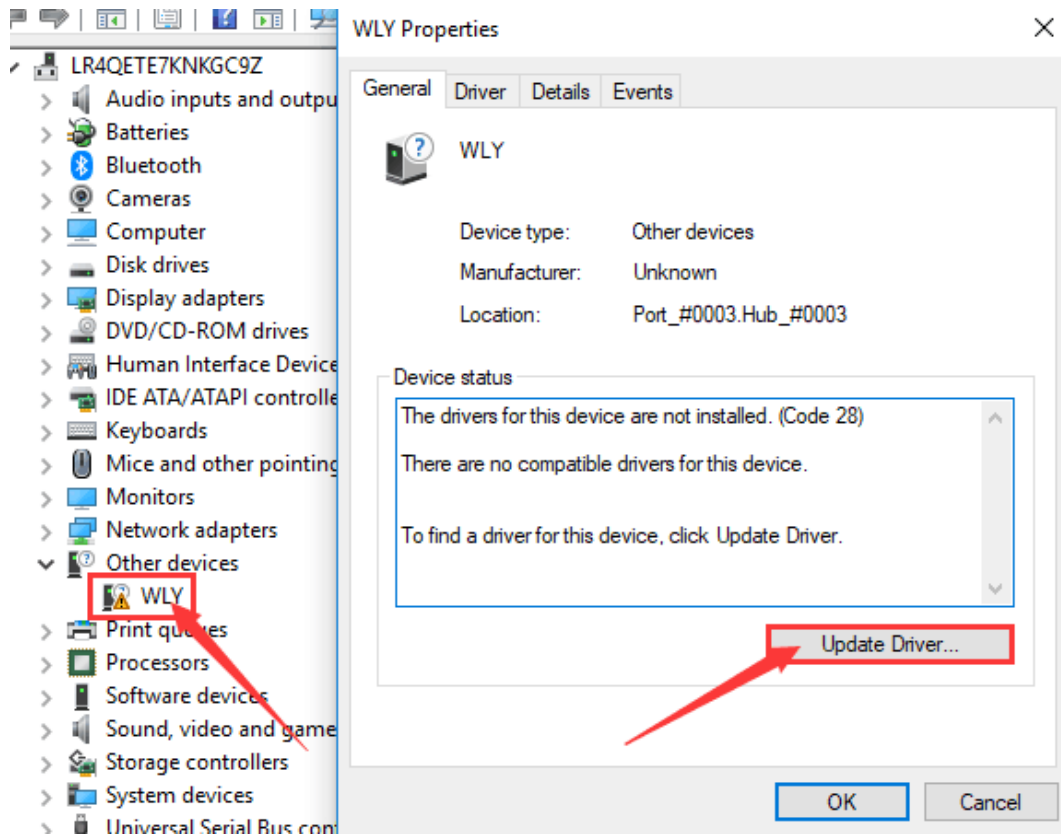
连接USB查看此名称“WLY”驱动： Connect USB to check this name "WLY" driver:



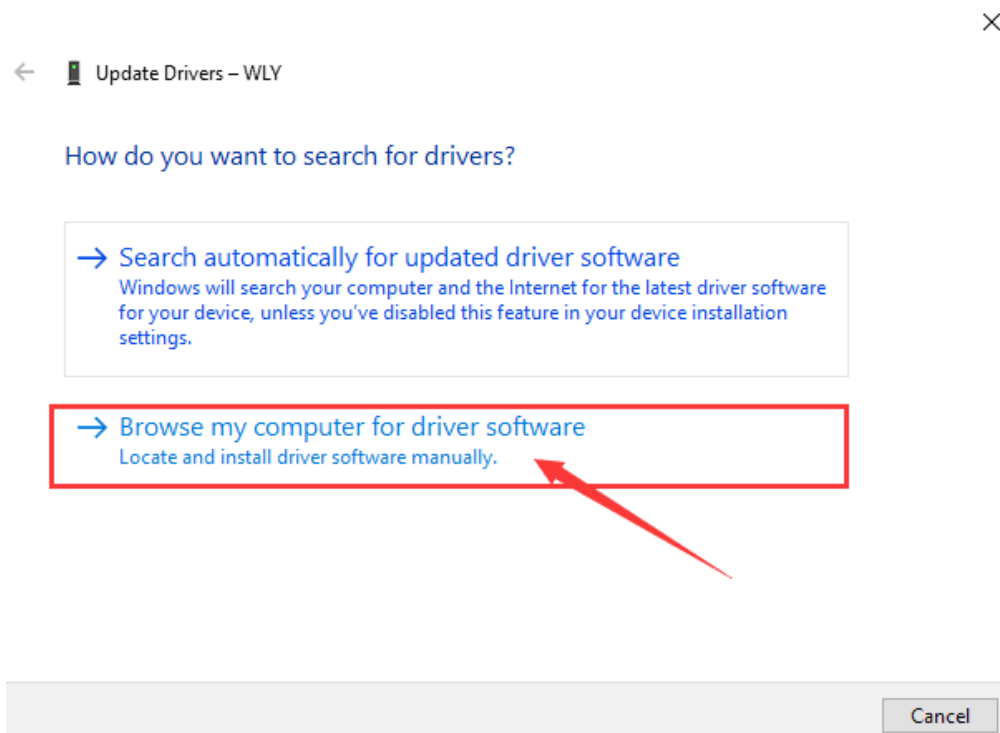
双击“WLY”此驱动,显示详细信息点击“Update Drive”:

You will find the driver “WLY”

Double click “WLY”, will appear its detail information. Left click “Update Driver”

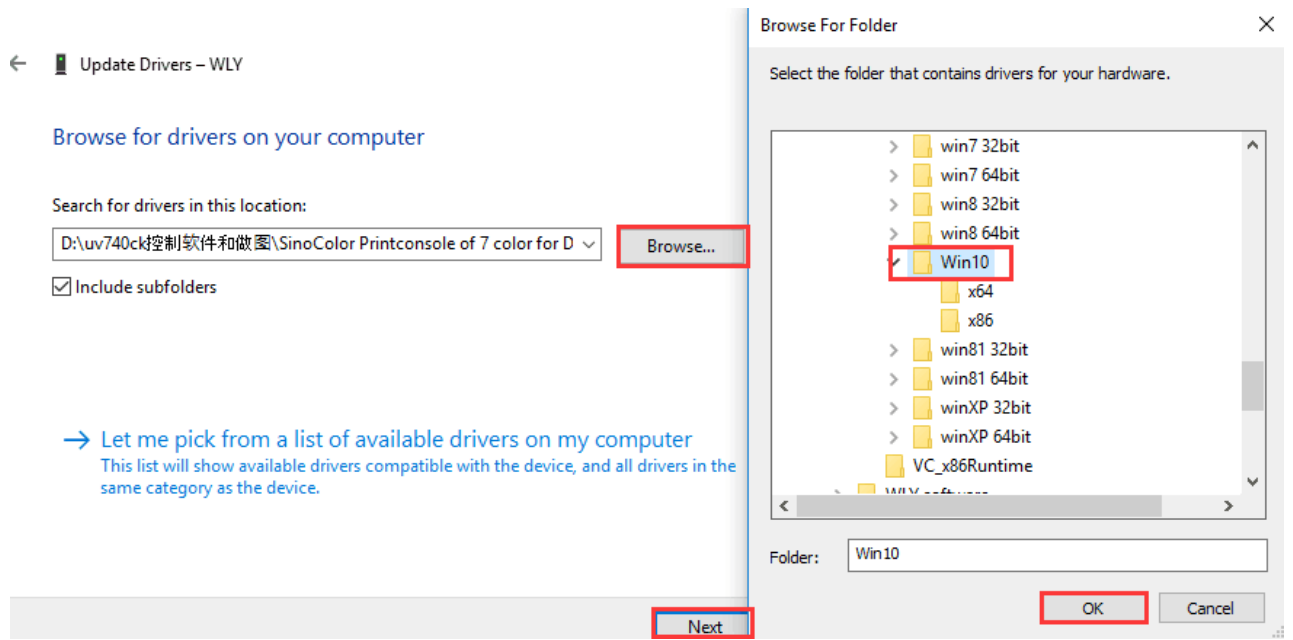


选择“Browse my computer for drive software”:
Choose “Browse my computer for drive software”:



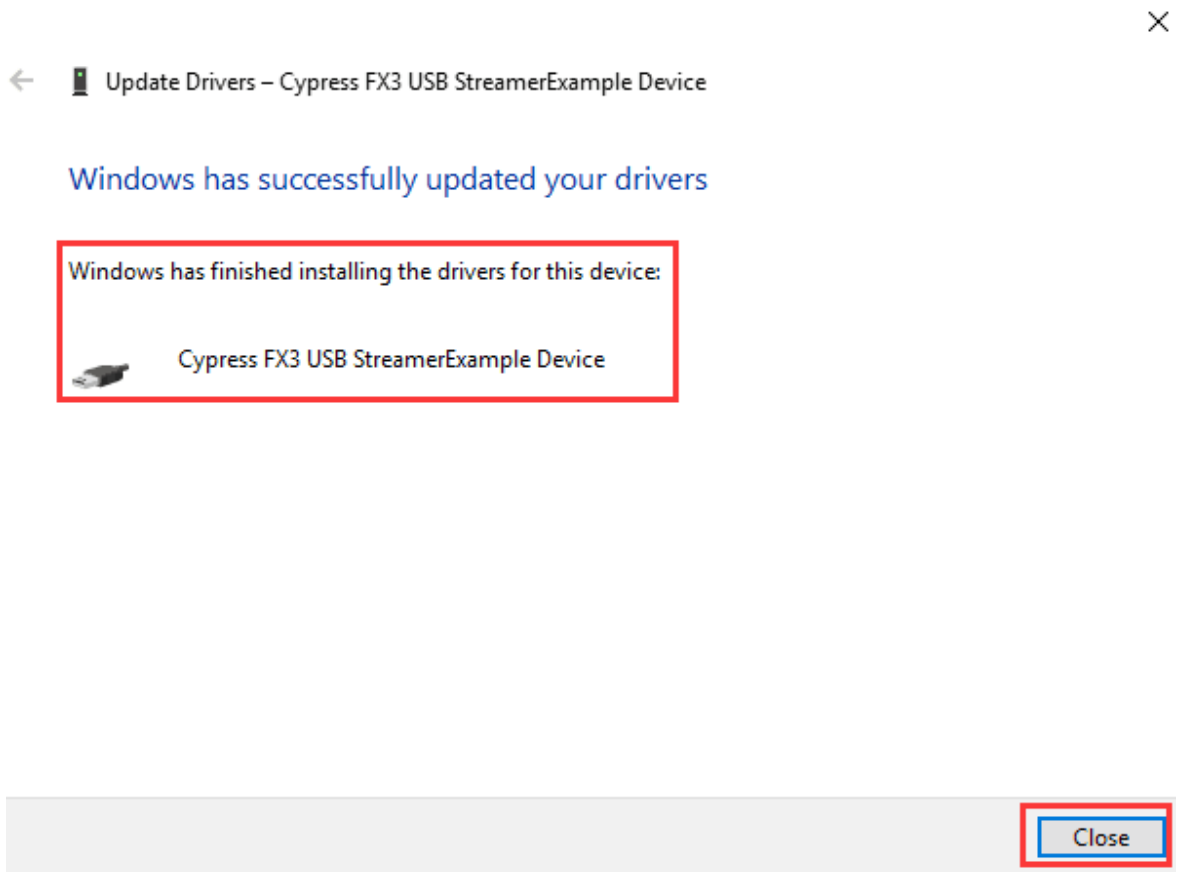
点击“Browse”，选择我司控制软件里面的“Drive3.0 WIN10”点击“OK”，然后再次点击“Next”(根据电脑系统的版本进行选择):

Click "Browse", And choose the document in our console software" Driver3.0"- "WIN10"(Choose according to your computer system) Then click "OK"- "Next"



完成驱动安装:

Driver installation finished. Close



四，软件控制 Software control

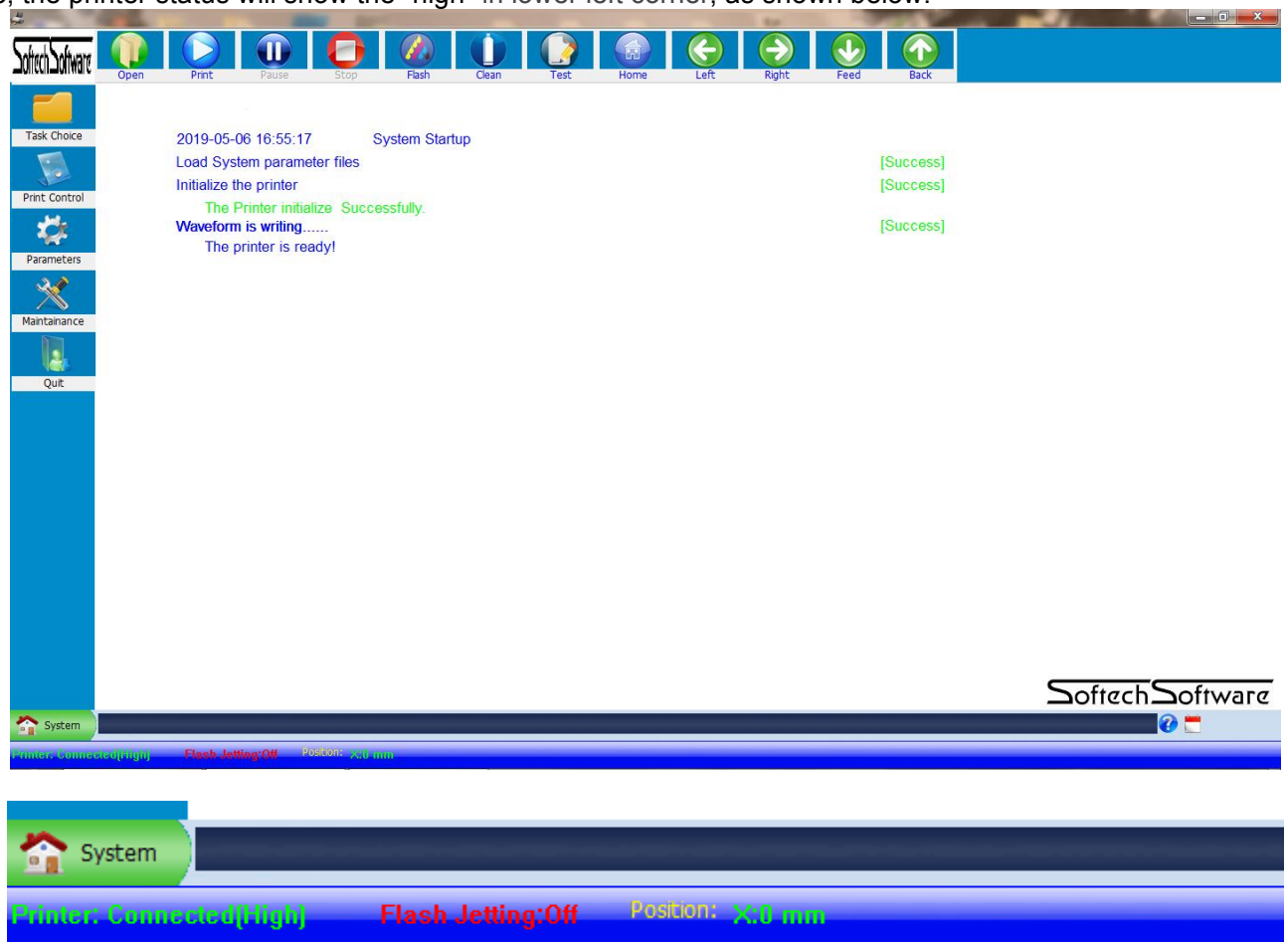
每次打开软件需要连接此加密狗：

Each time when you open the software, must insert this dongle into your computer.



机器开启之后，通过 USB 数据线连接电脑，插上加密狗，打开软件之后左下角打印机状态会显示高，如下图所示：

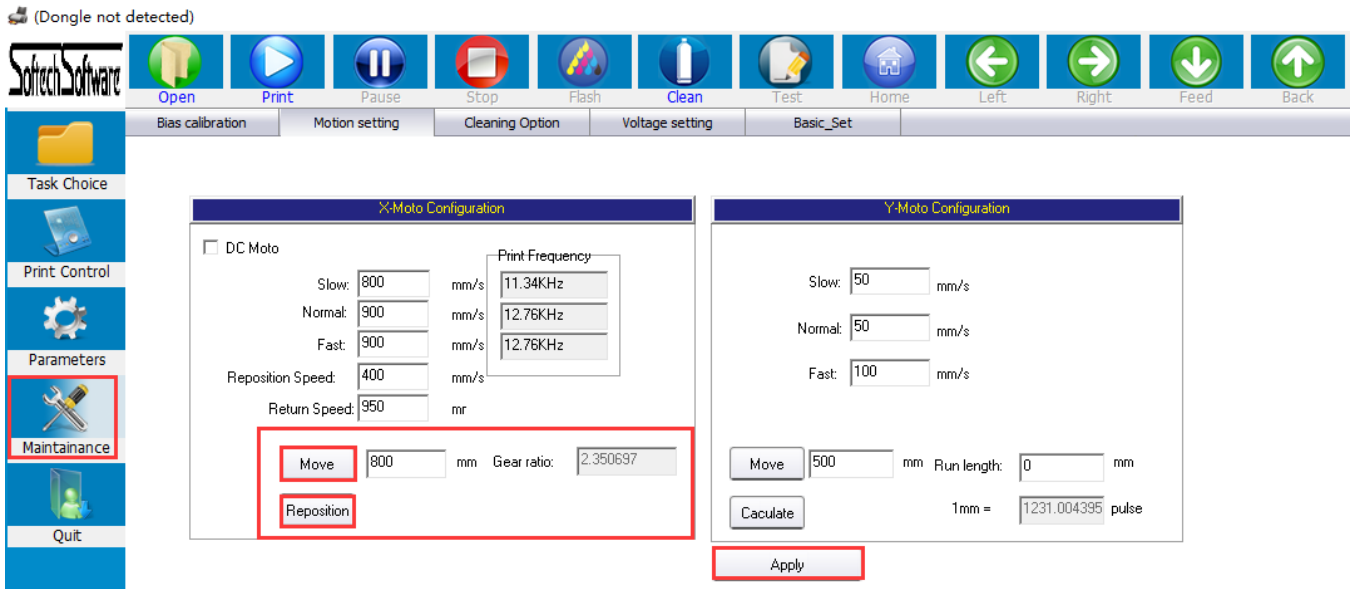
After the machine is turned on, connect the computer through the USB cable and plug the dongle. After opening the software, the printer status will show the “high” in lower left corner, as shown below:



校准尺轮比 (X,Y) : Gear ratio calibration (X, Y)

点击系统维护, X 运动设置, 会看到如图所示界面, 首先在移动后面填入一个较小值 (100), 点击移动, 此时, 小车移动停止后再点击复位,最后点击运用;再次重复设置数值 (200) 再次点击运动, 复位, 保存。

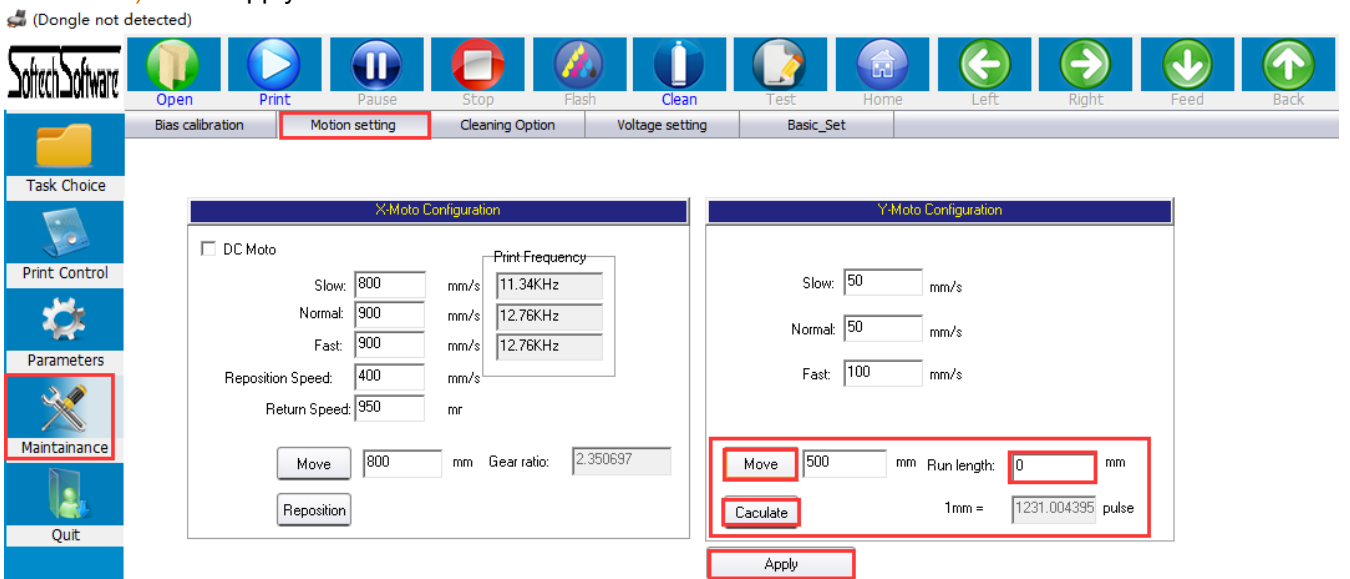
Click "Maintenance", "X Motion Setting", you will see the interface as shown, first fill in a small value (100) behind the "Move", click "Move", then click the "Reposition" after the printhead carriage stop moving (You will see the data behind "Gear Ratio changes), click "Apply"; Repeat the setting value (200) again, click the "move", "Reposition" and "save". (The Gear Ratio Data will change again. After these two steps, the X-Gear Ratio will be done).



Y 尺轮比: 首先在材料上做好标记后再移动后面填入 (100), 点击移动, 材料移动完成之后再次标记, 用尺量出实际移动距离, 填入走布长度框中, 点击计算 (注意, 每次只能点击一次计算), 保存。

Y-Gear ratio Calibration:

First, make a mark on the material (Any position), then fill (100) into the column behind "Move", click "Move". mark the material again after the material movement is finished, measure the actual moving distance with the ruler, fill in the length of the moving paper, fill into the column behind "Run Length", click Calculate (Note: Each time You can only click once to calculate). Click Apply to save the data.



检测机器动作运转，点击“Left”, “Right”, “Feed”, “Back”, “Home”观察机器运动动作是否正常。如果正常请关闭机器电源，准备安装喷头！

Check machine motion: Click “Left”, “Right”, “Feed”, “Back”, “Home” to check the whether the machine motion is normal. If it's normal, please turn off the machine and disconnect the power supply, Start to install the printhead!

安装喷头：（非常重要连接，如有疑问请联系客服）

Printhead Installation: (very important, any questions, please contact with technician)

Technician: Mr.Jack

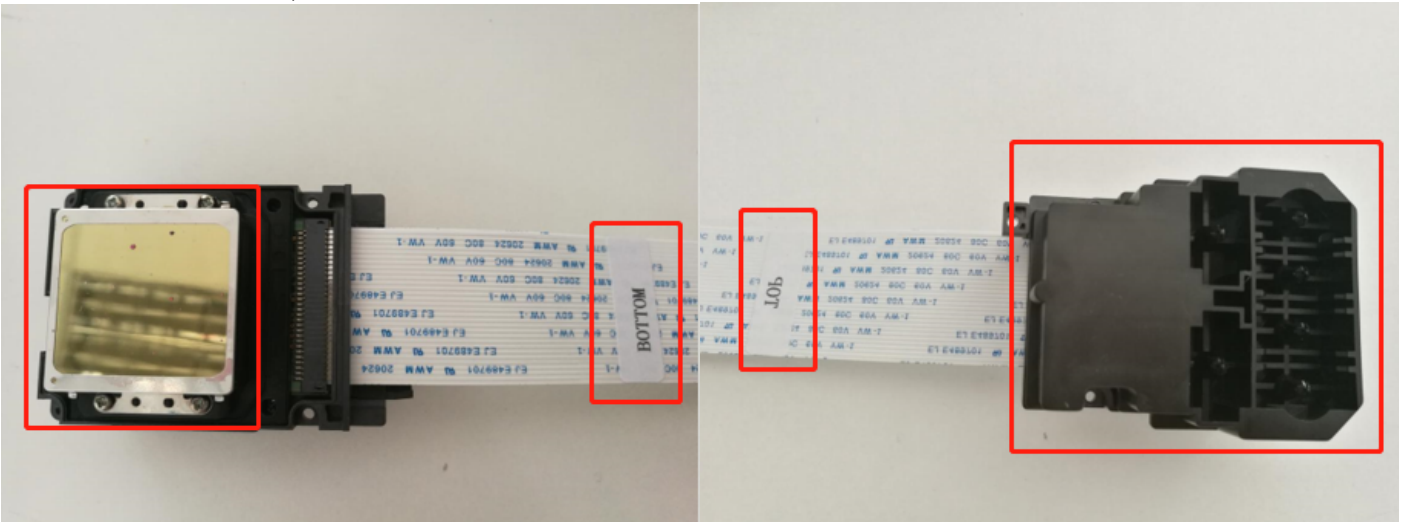
Email: support@sinocolor.com.cn

Whatsapp /Wechat ID:+86 189 39965808

Skype: sanyi_support

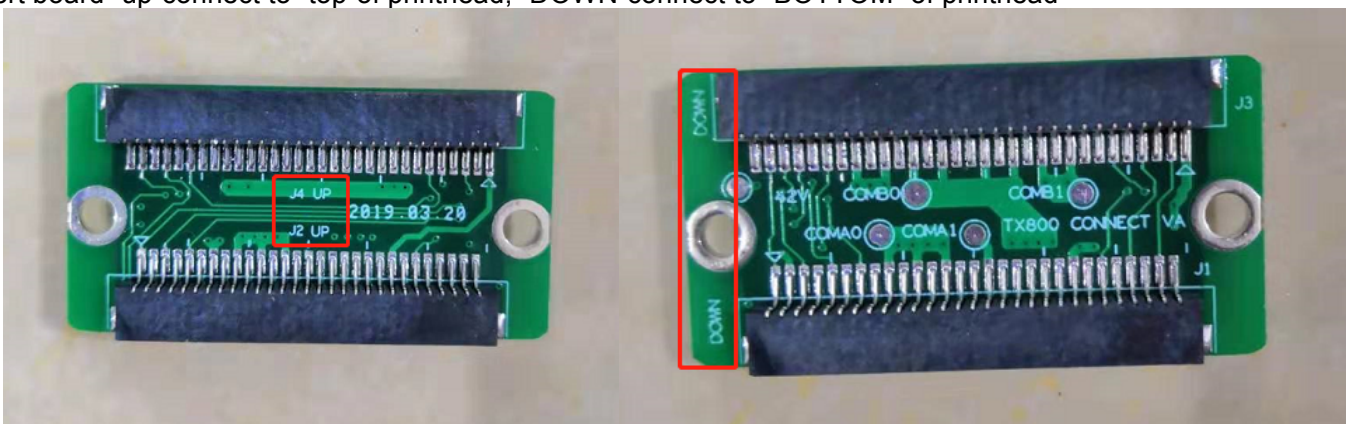
安装喷头线需要注意喷头底面连接“BOTTOM”,喷头正面连接“TOP”; 如下图示:

To install the printhead cables, need to notice the bottom of the printhead to connect “BOTTOM”, and the top of the printhead connect to “TOP”; As shown below:



转接板“UP”对应连接喷头“TOP”位置; “DOWN”对应连接喷头“BOTTOM”。

Convert board “up”connect to “top”of printhead; “DOWN”connect to “BOTTOM” of printhead



正常安装完成如下示: The normal installation is completed as follows:

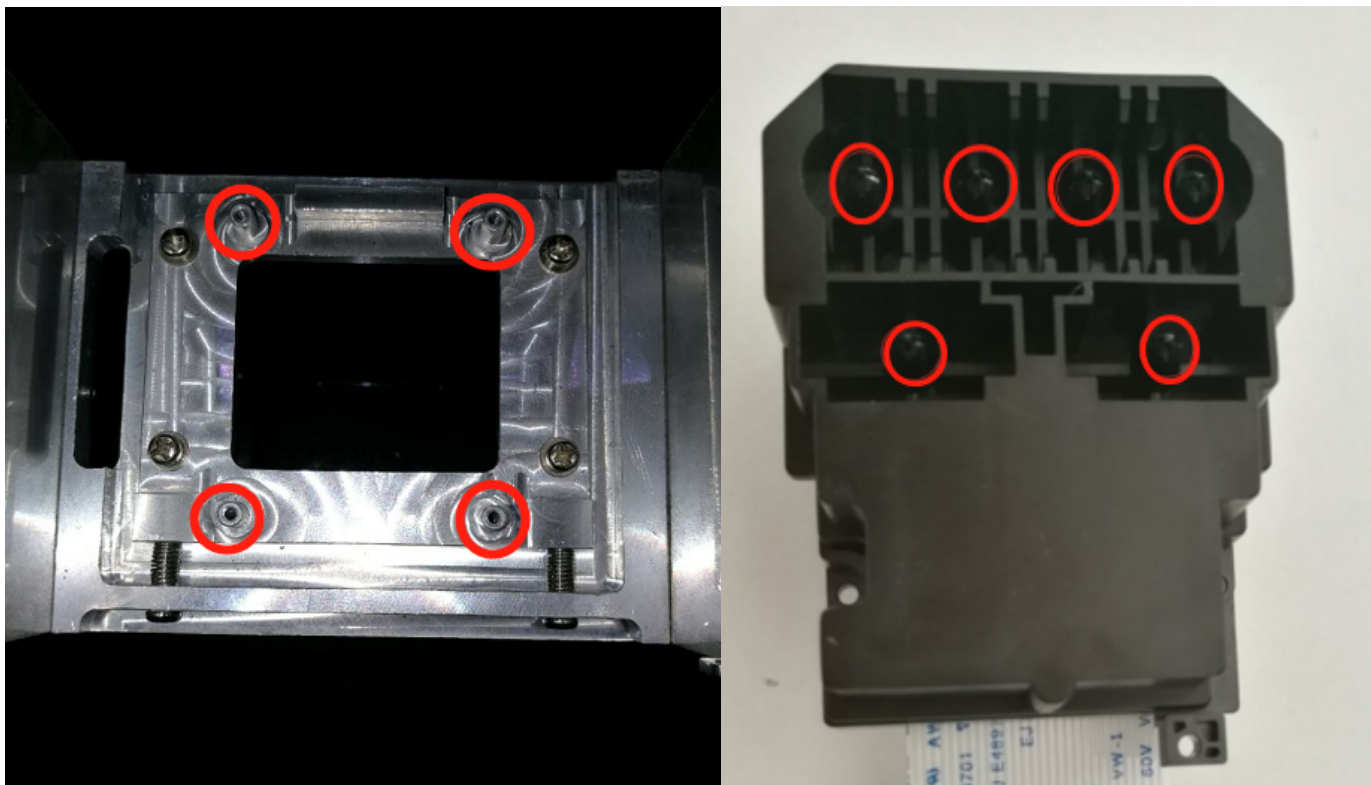


色彩模式 colors configuration: (CMYK+W)

| | | | |
|---|---|---|---|
| K | C | Y | W |
| M | | W | |

将打印头固定在托架上，通过4个固定柱固定喷头；根据墨水色彩模式，连接墨囊在喷头指定位置。

Fix the printhead on the carriage floor, then use 4 fixing posts to fix it. Connect the dampers to the specified position of the printhead according to above photo.

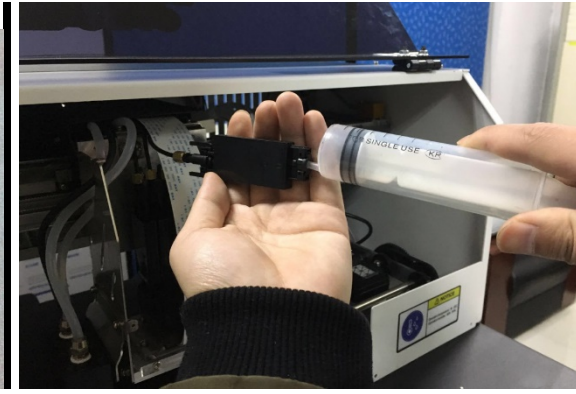


使用控制软件控制机器 Control the machine with console software

手动抽取墨水 Pump ink manually

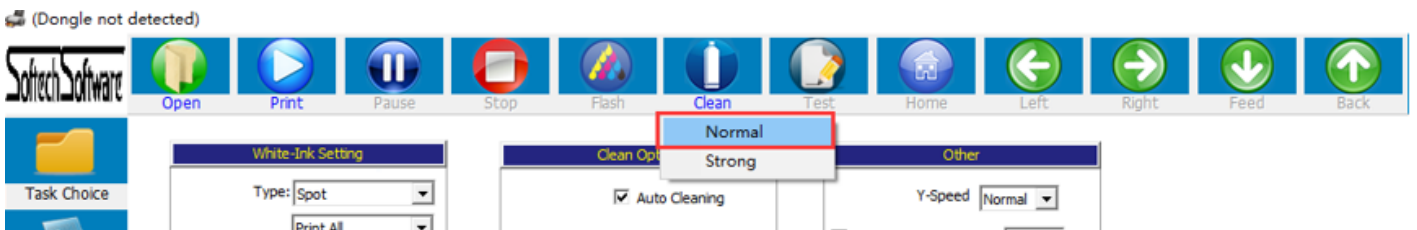
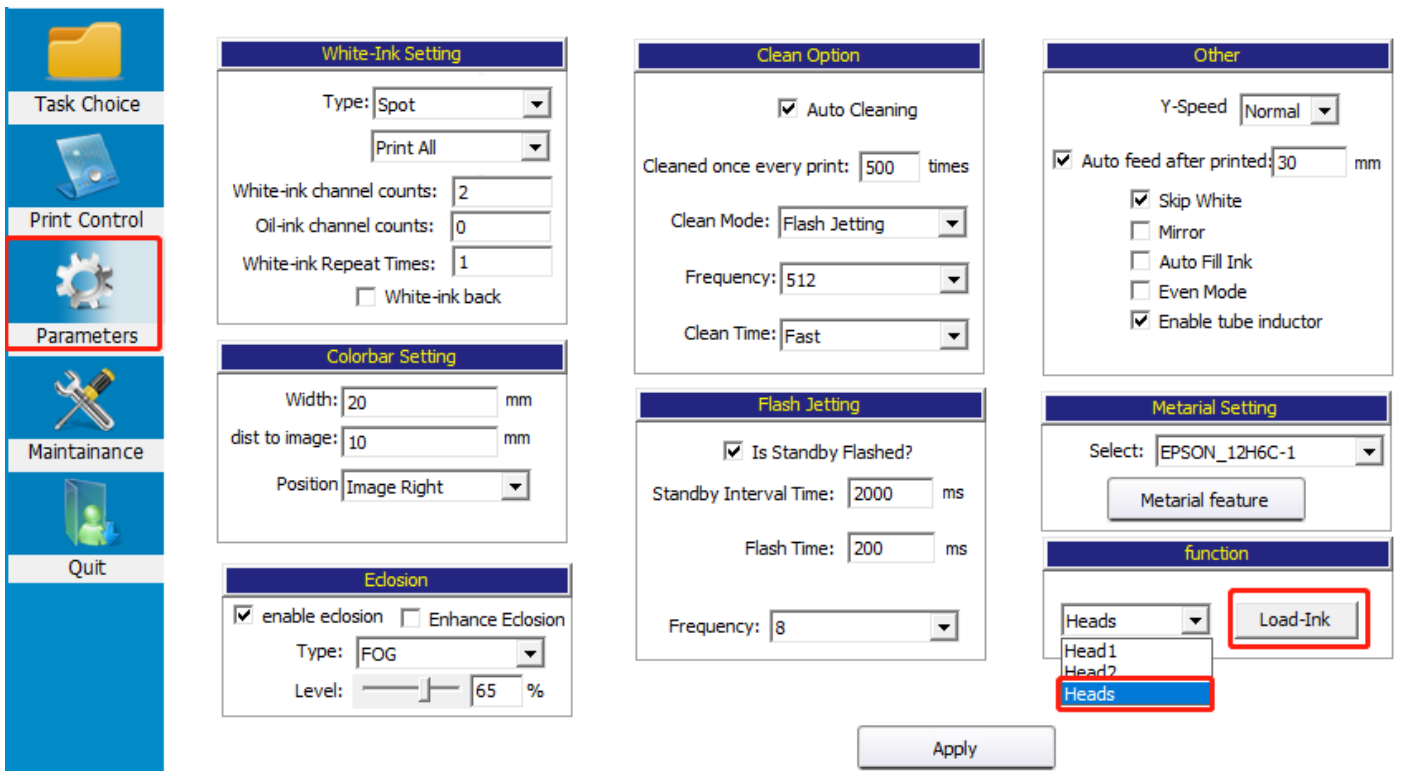
用注射器从墨囊的底部位置抽墨，注意将墨囊底部抬高（稍高于进墨管）后再抽墨，这样可以使墨水充满墨囊。（需要抽取每一个墨囊，并再次连接对应位置。）

Use a syringe to pump ink from the bottom of the damper. Note that the bottom of the damper need to be higher (slight above the ink tube) and then suck ink. By this way, will make the damper to be full with ink. (You need to pump each damper and then connect to the corresponding position again.)



点击“Parameters”，选择“Heads”点击“Load-Ink”；此时抽墨的墨泵会通过墨托进行抽墨，等待所有墨水出来（可以从墨托下的连接墨泵的吸墨管看出有没有吸到墨水）然后点击“STOP”停止泵送；然后单击“Clean”“Normal”钮清洁打印头的表面。

Click “Parameters”, select “Heads” and click “Load-Ink”; the ink pump will pump ink from the capping unit. Waiting for all the ink to be pumped out (can see that from the ink tube that connected to ink pump under the capping unit). Then click “STOP” to stop pumping; then click “Clean” - “Normal” to clean the surface of the printhead.

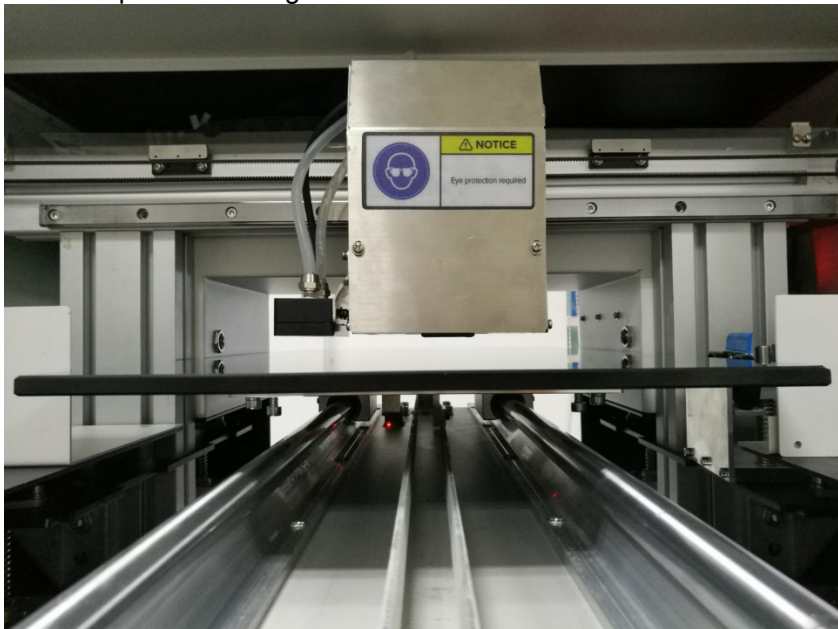


调整平台高度 **Adjust platform height**

在平台上安放好材料后，在打印前需要调整喷头底面和材料之间的高度（此高度应为1-2mm）。将小车移到平台上方，然后用平台上升/下降按钮调整平台高度，目视检查喷头底面和材料之间的距离，当它们之间的距离达到1-2mm时，完成平台高度调整。

After placing the material on the platform, before printing, you need to adjust the height between the bottom of printhead and the material (this height should be 1-2mm).

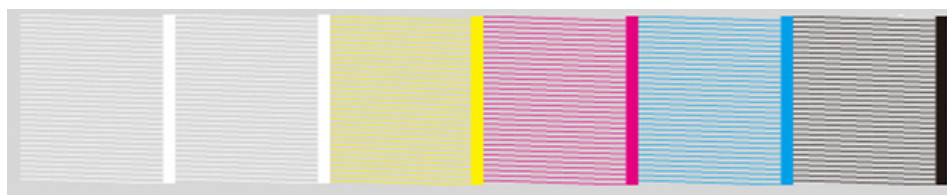
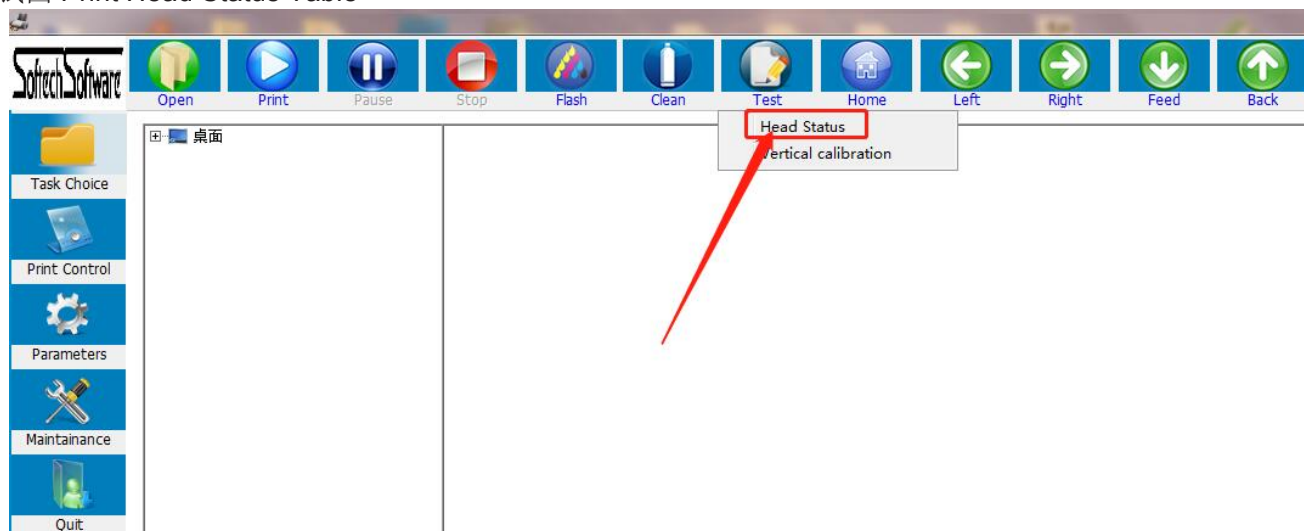
Move the carriage to be above the platform, then use the up/down button to adjust the height of the platform. Visually check the distance between the bottom of the printhead and the material. When the distance between them reaches 1-2 mm, the adjustment of platform's height was finished.



注意：但由于机械可能存在的误差，建议按照上述方法对喷头底面和材料之间的距离进行检查，避免损毁喷头。

Note: Due to the possible mechanical errors, we suggest to check the distance between the printhead surface and the material like this. Then avoid unexpected damage of the printhead.

打印测试图 Print Head Status Table



注意：此为完美测试图；如果有缺失或者断线，请重复上述工作抽墨（5-10s）后清洗再次打印测试图；如果重复10次以上，请联系客服！

Note: This is the perfect test image; if there is the lost or broken line, please repeat to pump ink (5-10s) and then clear and print the test chart again; if the nozzle test is still not good after you repeated more than 10 times, please contact technician!

Technician: Mr.Ma
 Email: support@sinocolor.com.cn
 Whatsapp /Wechat ID:+86 189 39965808
 Skype: sanyi_support

五， 校准 Calibration

(Dongle not detected)

Task Choice

Print Control

Parameters

Maintenance

Quit

Bi-Dir Offset

720resolution Fast -20 Print

Step Calibration

Steps: Base Step Print

Revise: 0.00 Base Step: 212374

Distance Calibration

Vertical : Head2: 0 Print Head3: 0 Print

Head4: 0 Print

Horizontal: Left_Print Right_Print

Color Offset

| | CH00 | CH01 | CH02 | CH03 | CH04 | CH05 |
|--------|------|------|------|------|-------|-------|
| H00 | K | C | M | Y | White | White |
| Ver... | 0 | 0 | 0 | 0 | 0 | 0 |
| Right | 0 | 0 | 0 | 0 | 0 | 0 |
| Left | 0 | 0 | 0 | 0 | 0 | 0 |

Print

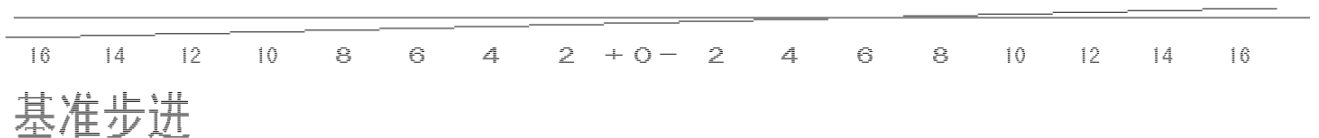
Apply

Parameters

| Parameters | Value |
|---|------------|
| Space of Heads | |
| Distance between Head 1 and Head 2... | 0 |
| Distance between Head 1 and Head 2... | 0 |
| PrintHead Selected | |
| Select print Head | PrintHead1 |
| UV lamp control setting | |
| The minimum range of irradiation of ... | 0 |
| The maximum range of irradiation of ... | 0 |

步进校准：在“Step Calibration”选择“Base Step”点击“Print”查看测试图；在 -6 的位置重叠，证明基础步进有的误差，需要调整“Revise”输入“-6”，点击界面“Apply”。（注意：保存完请再次校准，确保准确性）

Step Calibration: Select “Base Step” and click “Print” in “Step Calibration” to see the test image; The two lines overlapped on -6 position, It proves that the basic step has an error of -6, so need to input -6 to adjust “Revise”, click “Apply”. (Note: Calibrate again after save to make sure accuracy)



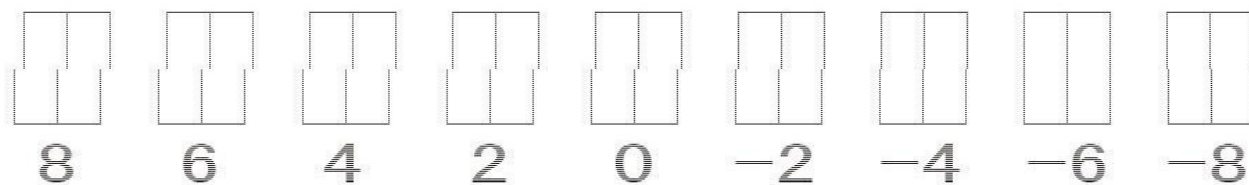
校准完成 Calibration completed:

16 14 12 10 8 6 4 2 + 0 - 2 4 6 8 10 12 14 16

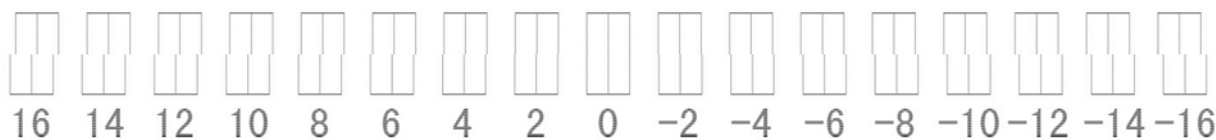
基准步进

双向校准: 在“Bi-Dir Offset”分别选择“720”，“360”点击“Print”进行校准。点击界面“Apply”。在“-6”的位置上下是对齐的，说明高速情况下，双向偏差“-6”，需要在后面调整框中加上“-6”，点击界面“Apply”（注意：保存完请再次校准，确保准确性）

Bi-Dir Calibration: Select "720", "360" in "Bi-Dir Offset", click "Print" to calibrate. Click "Apply". Above and below part are aligned at -6 position, means that under fast speed, Bi-Dir error is -6, need to add -6 in the adjustment box. Click "Apply" at the bottom of the screen to save the data. (Note: Please recalibrate after saving to ensure accuracy)



校准完成: Calibration completed:

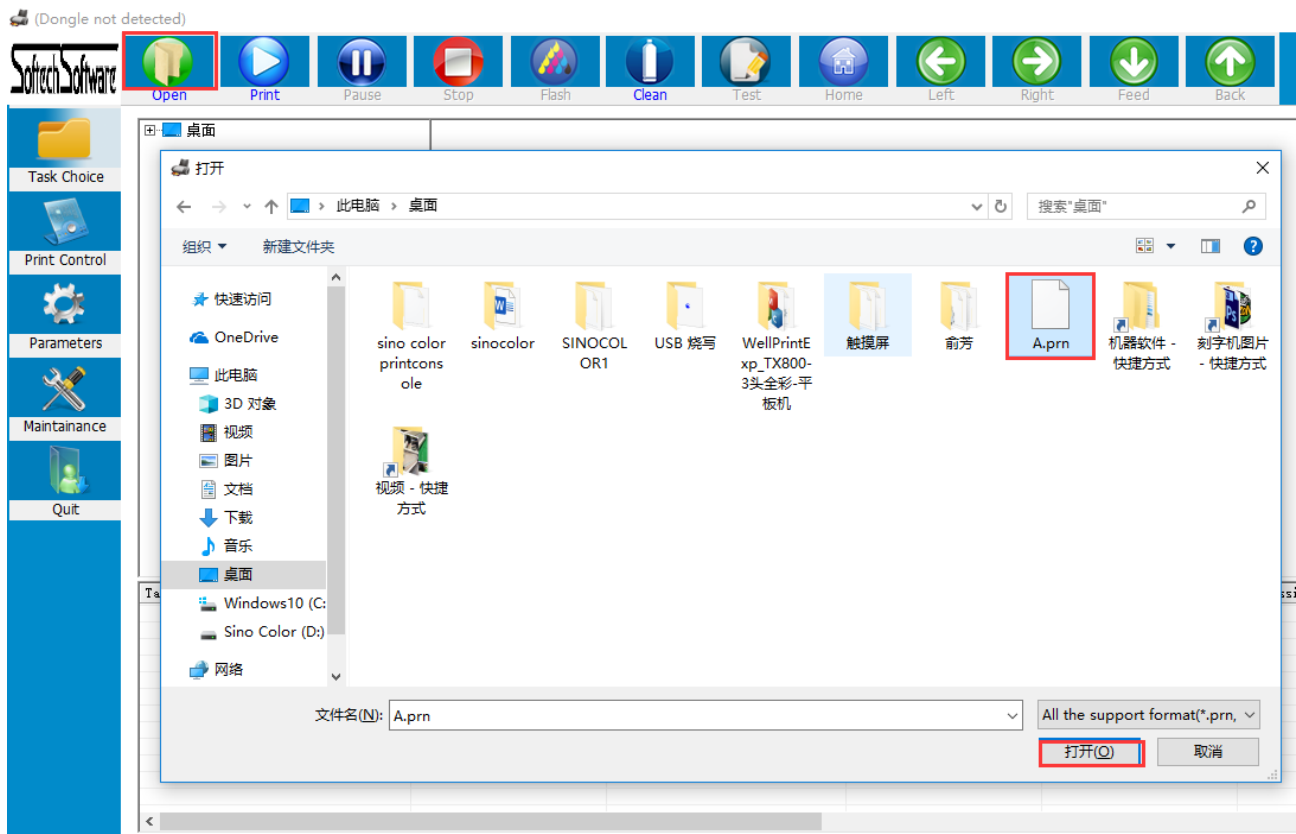


六， 载入打印文件,打印测试

Upload the printing file, print test

载入打印文件有三种选择，第一种，点击主菜单栏的打开文件界面，根据路径找到 RIP 好的 PRN 文件，选中之后双击或者点击下方打开。

There are three options for loading the file. The first one is to click "Open" in the main interface and find PRN file(after RIP well). Double click on it or click to open.



第二种，主菜单栏点击任务选择，找到存放 RIP 文件路径，双击需要打印的文件

Second, click "Task Choice" in the main menu, find the path to store the RIP file, and double-click the file to print.

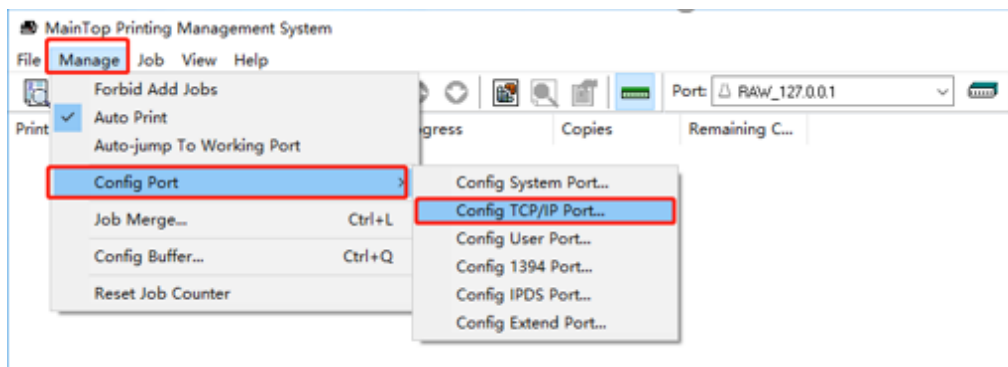


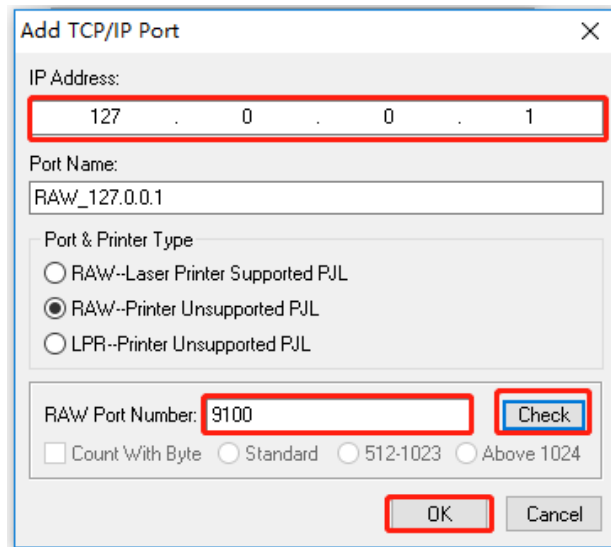
第三种，RIP 软件直接打印。

打开如下图所示“MainTop Print Manager”设置端口“127.0.0.1”直接打印

Third, Print directly from the Rip Software.

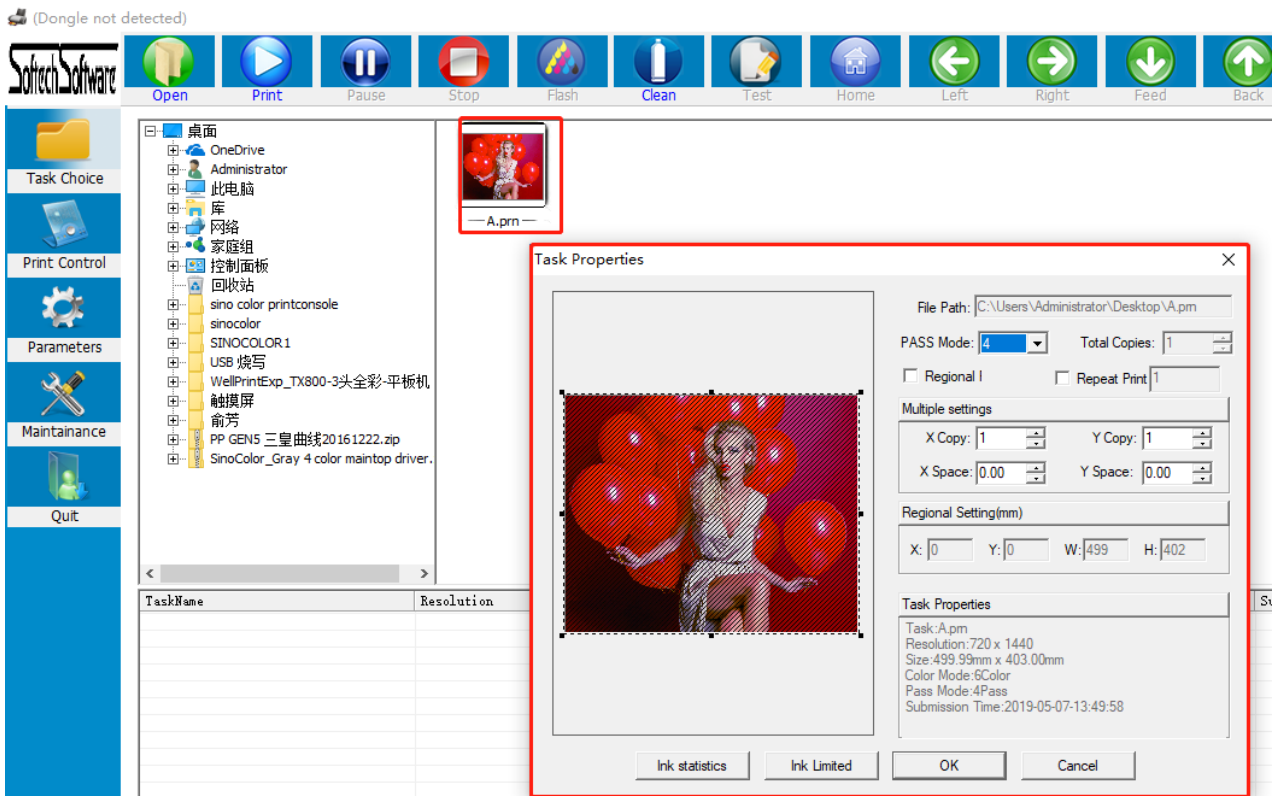
Open the "MainTop Print Manager" (If your printer is using Maintop Rip Software), setting port "127.0.0.1" as shown below to print directly





当双击打印任务时，会弹出任务属性框，如下图所示：

When you double-click the task you want to print, will pop up task properties window like below:



任务属性：Function of Task properties:

可以选择重复打印，当勾选重复打印之后，每次打印完成，车头都会复位，然后再同一白边起始位置开始打印同一个任务。

多幅设置，可以设置横向幅数和纵向幅数，中间可以设置间隔，间隔的单位是 mm 毫米

区域打印，可以手动选取文件的一部分进行打印，当区域打印时，重复打印，和多幅设置无效

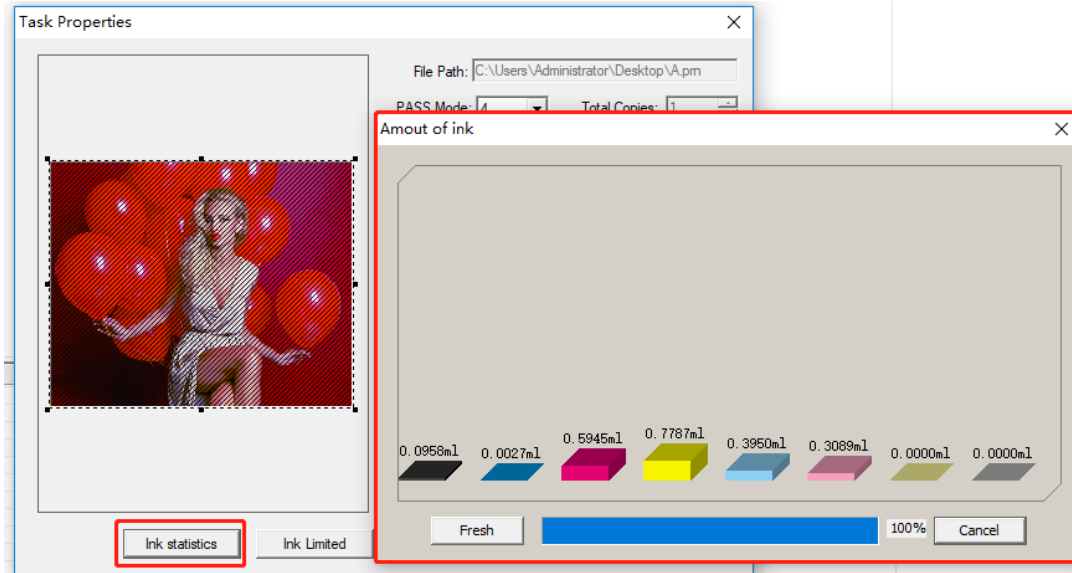
Repeat Print: When the "Repeat print" is chosen, each time when printing completed, the carriage will back to base point, and then start to print at the same starting point.

Multiple setting, you can set the X (X Direction) and Y (Y direction) data, the space of two design (X Space, and Y Space). The data for space is based on millimeter.

Regional printing, you can manually select to print part of the file. In this case, repeat print and multiple settings are invalid

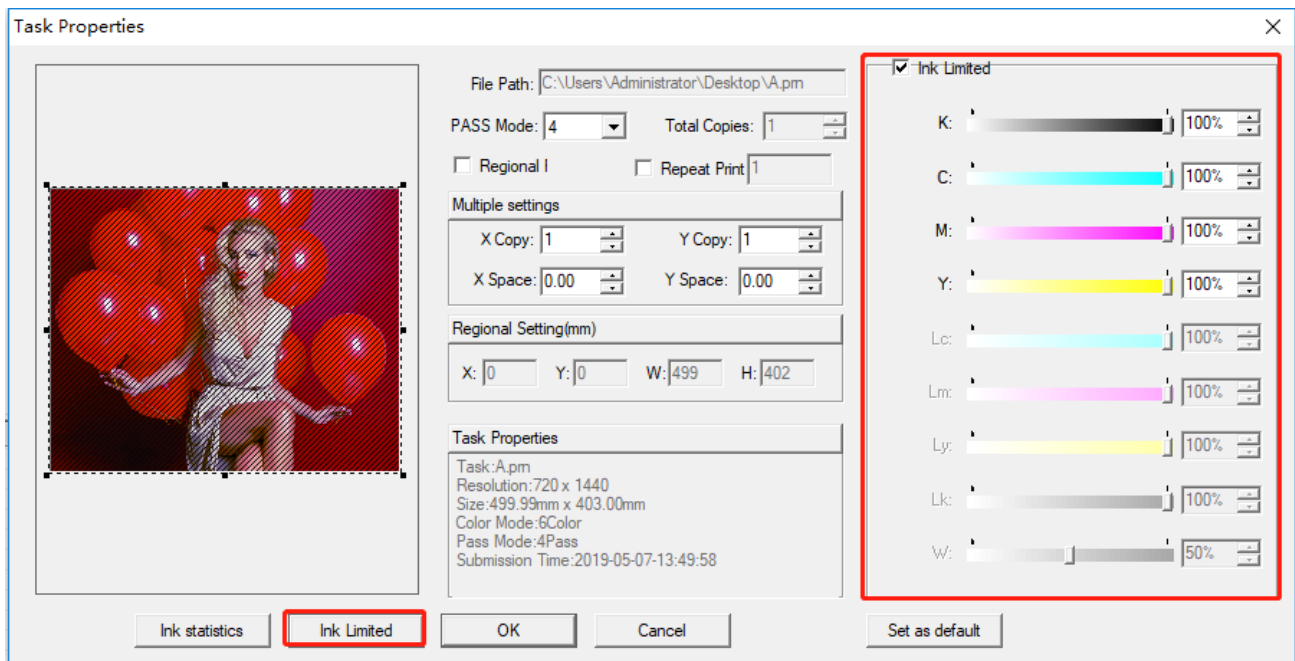
墨量统计：表示当前 PRN 文件所需的墨量

Ink statistics: Indicates the amount of ink requested for the current PRN file. Please check below picture



墨量控制，会出现如下图所示界面，勾选上墨量控制，可以对当前“PRN”文件各墨量进行调节：

When click "Ink Limited" under the task properties, the interface shown as below. If tick Ink Limited, then can adjust the amount of ink in the current PRN file.

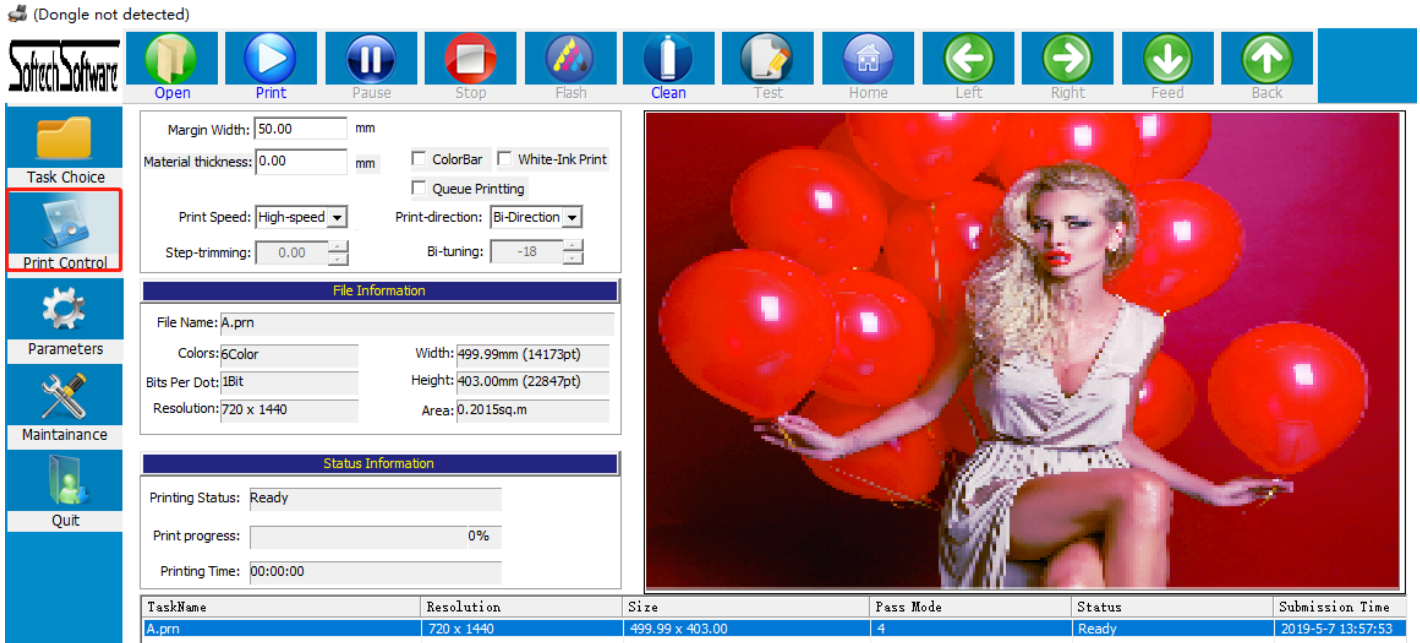


注：当墨量截取之后，输出的图像精度会降低，点会变粗，一般不建议在此处调节墨量

But please kindly note: If reduce the ink amount, the accuracy of the output image will decrease, and the dots will become bigger. So don't to adjust the ink volume here.

打印:当任务导入完成,可以点击软件“Print Control”,同时软件界面会显示当前PRN 任务的文件信息,例如设置起点打印位置“Margin Width”,查看颜色数量,面积等,如下图:

Print: When the task uploaded, you can click “Print Control”, and the software interface will show the file information of the current PRN (The format of ripped art) task, for example, set the starting point position -“Margin Width”, and check the number of colors, Area size, etc., as shown below:



白边设置: 设置 PRN 文件 X 方向起始打印位置。

彩条打印: 勾选彩条, 彩条详细设置在参数设置界面, 可以设置彩条宽度, 彩条到打印图片的距离, 彩条只在图片左侧、右侧, 或者在两侧都出

队列打印: 当同时导入多个 PRN 任务时, 勾选上队列打印, 会连着打印完所有任务

车头速度: 可以选择高、中、低速, 具体速度在系统维护, 运动设置界面可调

打印方向: 可以选择单向左, 单向右, 双向, 选择双向打印时, 要先调试好双向值

再次点击“print”即可打印任务。

Margin Width: Set the position to start printing in the X direction.

Color Bar: Tick the color bar, then will print with color bar. (Can find the setting of color bar inside “Parameters”). Can set the width of the colorbar, and the distance between colorbar and the printing image, and can also choose to print color bar only in the left, or only in the right, or both left and right.

Queue printing: When importing multiple PRN tasks at the same time, choose the queue print, it will print all the tasks one by one.

Print speed: high, medium and low speed can be selected. The exact speed can be adjusted in “Maintenance”- “Motion Setting”.

Print direction: You can select “to-left”, “to-right”, and “Bi-direction” printing. When selecting bidirectional printing, you must first finish the bi-direction printing calibration (Calibration it from “Maintenance”- Bias Calibration”- “Bi-Dir Offset”

Click "print" to print the task

七， 软件功能介绍

Introduction of The Function of Software

标题菜单栏： Title Menu



打开文件： 导入 RIP 好的 PRN 文件进行打印

打印： 导入好 PRN 文件之后，选种文件，点击打印，开始打印当前任务

暂停： 打印过程，暂停打印，小车复位，按钮此时变为 继续，点击继续，任务继续打印停止： 停止当前打印任务

闪喷： 打开或关闭喷头待机闪喷

清洗： 当喷头状态不佳时，对喷头进行清洗打印校准图： 打印喷头状态图，垂直状态图

车头回零： 当车头不在原点时，可以让小车直接复位回到原点

左移： 小车向左移动

右移： 下车向右移动

进料： 材料向前移动

退料： 材料向后移动

Open: Import PRN file for printing

Print: After importing the PRN file, select the file and click Print to start printing the current task.

Pause: the printing process, pause printing, the car resets, the button changes to <continue> at this time, click continue the task printing again

Stop: Stop printing for current printing task

Flash: turn on or off the nozzle standby flash

Clean: When the need is in poor condition, need cleaning.

Test: print nozzle status data, vertical state diagram

Home: when the front of the carriage is not at the origin, Click Home, the carriage can be directly reset to the original point.

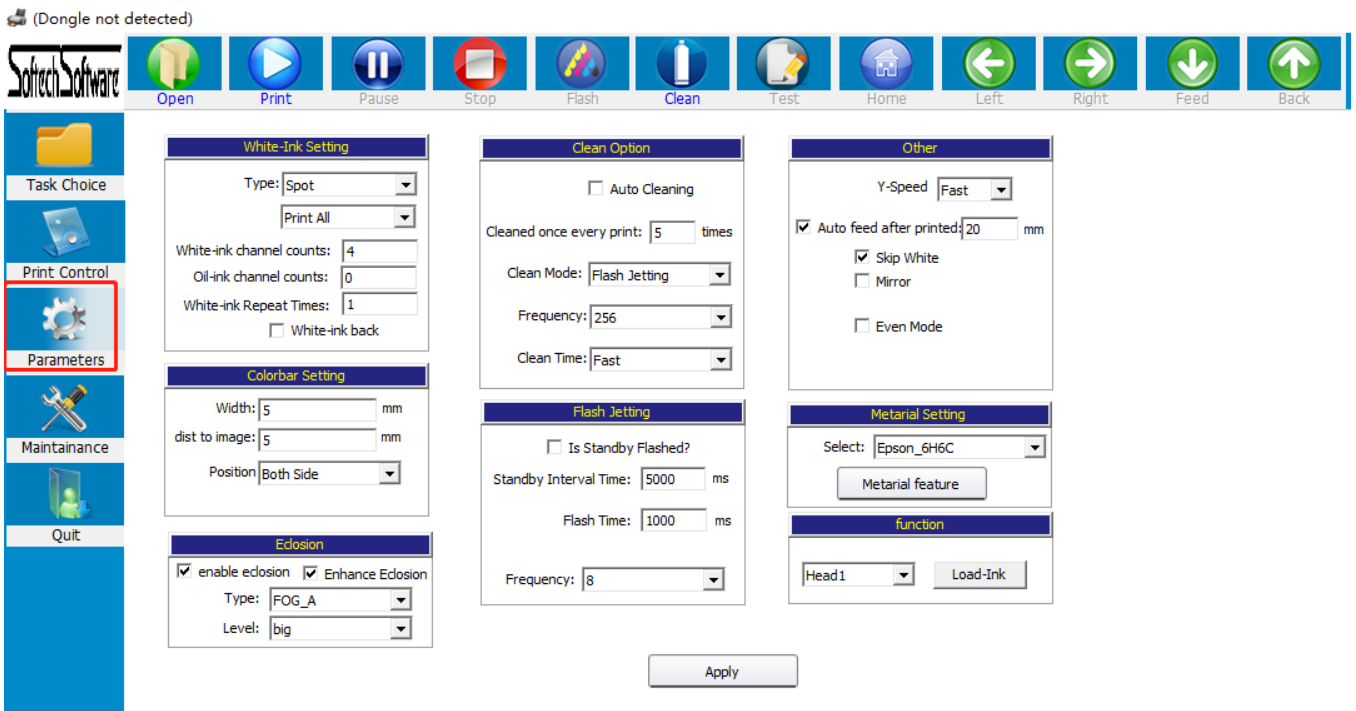
Left: the carriage moves to the left

Right: the carriage moves to the right

Feed: material moves forward

Back: material moves backward

参数设置界面： "Parameter" Interface



白墨设置：请保持出厂设置。

White ink setting: Please don't change the parameter here. Keep it as factory setting.

彩条设置：设置彩条的宽度，离图片距离，位置，左侧、右侧、或者两侧

Color setting: set the colorbar width, distance to image, position (left side, right side, or both sides)

边缘羽化：默认只需要勾选上边缘羽化即可（请勿选择加强羽化），类型一般选择雾喷，幅度根据实际调整，幅度越大，速度越慢，效果越好。加强羽化在打印色块，或者喷头状态较差时开启使用，开启加强羽化，打印速度会降低，但效果会提升很多，可以根据打印出来效果实际调试

Eclasion: Usually only need tick "enable eclasion". Please don't choose "Enhance eclasion". That will generate problem.

The "type" generally chooses Fog.

"Fog" is common eclasion.

"Fog_A" is enhance eclasion.

The level is adjusted according to the actual situation. The larger level, the slower speed and the better effect.

"Fog_A" will be needed when printing solid color/pure color, or when the nozzle is in poor condition. Turn on the "Fog_A", the printing speed will decrease, but the effect will be improved a lot, you can adjust just according your printing result.

自动清洗 和 闪喷 Clean Option and Flash jetting:

请勿修改， 保存出厂设置

Please don't edit this part. Just keep factory settings.

装墨功能：可选：喷头 1、喷头 2 和 双头。点击“装墨”按钮，系统控制墨盖上升到抽墨位置，墨泵开始工作对喷头进行抽墨，按钮显示变为“停止”，直至手动点击“停止”按钮，墨泵停止抽墨

Function- Load Ink:

You can choose Head 1, Head 2 and Heads.

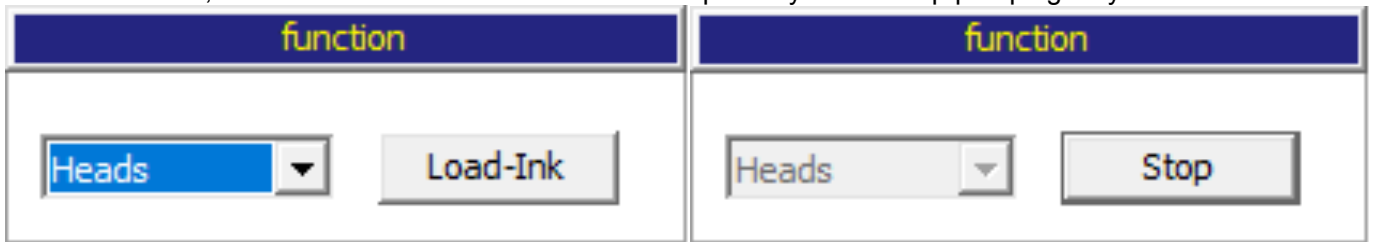
Heads 1, means pump ink for left printhead.

Heads 2 means pump ink for right printhead.

Heads, means pump ink for both heads.

Then click the "Load-Ink" button, will start to pump ink.

And in the mean time, the "Load-Ink" button will become "Stop". So you can stop pumping as you need.



系统维护界面 System maintenance interface

(Dongle not detected)

The interface features a top navigation bar with icons for Open, Print, Pause, Stop, Flash, Clean, Test, Home, Left, Right, Feed, and Back. Below this is a menu bar with tabs for Bias calibration, Motion setting, Cleaning Option, Voltage setting, and Basic_Set. The main area is divided into several sections:

- Bi-Dir Offset:** Includes a resolution dropdown (360resolution), a speed dropdown (Fast), and a value field (-18) with a Print button.
- Step Calibration:** Includes a Steps dropdown (Base Step), a Revise field (3.00), a Base Step field (62794), and a Print button.
- Distance Calibration:** Includes vertical and horizontal calibration fields for Head2, Head3, and Head4, each with a Print button. Horizontal calibration also includes Left_Print and Right_Print buttons.
- Parameters:** A list of system parameters with their current values, such as 'Space of Heads' and 'UV lamp control setting'.
- Color Offset:** A table for color calibration with columns CH00 through CH05 and rows for H00, H01, and various directions (Ver..., Right, Left).

偏差校准 Bias calibration:

This section provides a detailed view of the calibration options, with red boxes highlighting the Bi-Dir Offset, Step Calibration, and Distance Calibration sections. The Color Offset table is also visible on the right side of the interface.

Color Offset Table:

| | CH00 | CH01 | CH02 | CH03 | CH04 | CH05 |
|--------|------|------|------|------|------|------|
| H00 | C | C | M | M | Y | Y |
| Ver... | 0 | 0 | 0 | 0 | 0 | 0 |
| Right | 0 | 0 | 0 | 0 | 0 | 0 |
| Left | 0 | 0 | 0 | 0 | 0 | 0 |
| H01 | K | K | M | M | C | C |
| Ver... | 0 | 0 | 0 | 0 | 0 | 0 |
| Right | 0 | 0 | 0 | 0 | 0 | 0 |
| Left | 0 | 0 | 0 | 0 | 0 | 0 |

双向校准: 打印前需要对 180 精度, 360 精度, 低、中、高速分别打印校准图校准, 在调试说明里对双向校准图有详细说明。

Bi-Dir calibration: Before printing, you need to do calibration for 180 ,360 resolution, low, normal and Fast speed. You can find detail introduction of bi-direction calibration in previous pages.

步进校准: 打印前需要对“基础”和需要打印的步进进行校准

Step calibration: before printing, need Calibration of the “base step” and the steps that need to be printed

距离校准: 分为横向距离和纵向距离校准

Step calibration: before printing, need Calibration of the “base step” and the steps that need to be printed

颜色校准: 对机器颜色进行配置和校准

Step calibration: before printing, need Calibration of the “base step” and the steps that need to be printed.

运动设置: Motion Settings:

The screenshot shows the 'Motion setting' tab in a software interface. It contains two main configuration panels: 'X-Moto Configuration' and 'Y-Moto Configuration'. The 'X-Moto Configuration' panel includes a 'DC Moto' checkbox, speed settings for Slow (800 mm/s), Normal (900 mm/s), and Fast (900 mm/s), a 'Print Frequency' dropdown menu with options 11.34KHz and 12.76KHz, 'Reposition Speed' (400 mm/s) and 'Return Speed' (950 mm/s) settings, and 'Move' (800 mm) and 'Reposition' buttons. The 'Y-Moto Configuration' panel includes speed settings for Slow (50 mm/s), Normal (50 mm/s), and Fast (100 mm/s), a 'Move' (500 mm) button, a 'Run length' (0 mm) field, a 'Calculate' button, and a display showing '1mm = 1231.004395 pulse'. An 'Apply' button is located at the bottom of the Y-Moto panel.

X 电机设置 (小车方向): X Motor configuration(carriage moving direction):

打印控制界面的车头速度在此处设置, 低、中速可以根据实际情况自己设置, 高速有一定速度限制, 不能超过喷头的喷打频率, 建议出厂默认设置。复位速度, 点击软件标题菜单中的车头回零时, 小车回零的运动速度。单向回车速度: 单向打印时, 小车返回运动的速度。移动、复位: 校准 X 齿轮比。

The “Print speed” in “ print control” interface is set here. The low and normal speed can be set according to the actual situation.

There is a certain limit at high speed, which can't exceed the printing frequency of the nozzle. The factory default setting is recommended.

Reposition speed: When click the carriage back to 0 in the software title menu, the speed of the carriage returning to zero. One-way carriage speed: The speed of the carriage return.

Move, reposition: Calibrate the X gear ratio.

Y 电机设置(走料方向): Y Motor configuration (feeding direction):

Y 电机的速度, 分低、中、高速。参数设置界面其它设置中的走料速度对应的值在此处设置, Y 速度越快, 打印过程

看着越流畅，但是在保证不电机不丢步前提下，具体速度需要实际调试确定值。移动、计算，校准 Y 方向齿轮比时使用，详细在调试步骤中有说明。

The speed of the Y , have low, middle and high speed. The feeding speed of the parameter setting interface is set here. Y speed more faster, printing process looks more smoother. However, under ensuring that the motor does not lose steps, the specific speed needs to be adjusted actually.

Move and Calculate Use them when calibrating the Y-direction gear ratio, the detail process has mentioned in test step.

注：当前界面参数修改之后，都需要点击下方的应用按钮，否则修改参数无效(请保持出厂设置，如需更改请联系售后人员)

Note: After modifying the current interface parameters, you need to click Apply button below, otherwise the modification parameters are valid

清洗设置, 电压设置 **Cleaning option And Voltage Setting:**

请保持出厂设置

Please keep factory settings and don't edit these.

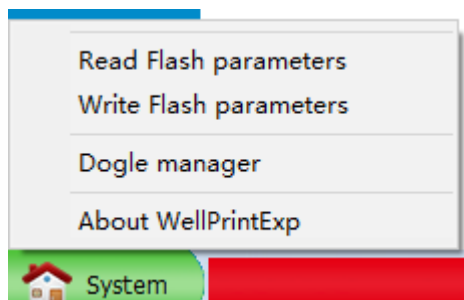
基础设置 **Basic Settings:**

本界面其他内容请保持出厂设置。

Please keep as factory settings.

| Bias calibration | Motion setting | Cleaning Option | Voltage setting | Basic_Set | | | | | | | | | | | | | | | | | | | | | | | | | | | | | | | | | | | | | | | | | | | | | | | | | | | | | | | | | | | | | | | | | | | | | | | | | | | | | | | | | | | | | | | | | | | | | | | | | | | | | | | | | |
|---|----------------|-----------------|-----------------|--|------|------|------|------|------|------|------|------|--|-----|---|---|---|---|---|---|--|-----|---|---|---|---|---|---|--|--|--|--|--|--|--|--|--|--|--|--|--|--|--|--|--|--|--|--|--|--|--|--|--|--|--|--|--|--|--|--|--|--|--|--|--|--|--|--|--|--|--|--|--|--|--|--|--|--|--|--|--|--|--|--|--|--|--|--|--|--|--|--|--|--|--|--|--|--|--|--|--|--|--|--|--|--|--|--|--|
| <div style="border: 1px solid black; padding: 5px;"><p style="text-align: center; margin: 0;">Base Step Value</p><p>1Pass Step: <input style="width: 80px;" type="text" value="720"/></p></div> | | | | <div style="border: 1px solid black; padding: 5px;"><p style="text-align: center; margin: 0;">Color Offset</p><table border="1" style="width: 100%; border-collapse: collapse;"><thead><tr><th></th><th>CH00</th><th>CH01</th><th>CH02</th><th>CH03</th><th>CH04</th><th>CH05</th><th></th></tr></thead><tbody><tr><td>H00</td><td>C</td><td>C</td><td>M</td><td>M</td><td>Y</td><td>Y</td><td></td></tr><tr><td>H01</td><td>K</td><td>K</td><td>M</td><td>M</td><td>C</td><td>C</td><td></td></tr><tr><td></td><td></td><td></td><td></td><td></td><td></td><td></td><td></td></tr><tr><td></td><td></td><td></td><td></td><td></td><td></td><td></td><td></td></tr><tr><td></td><td></td><td></td><td></td><td></td><td></td><td></td><td></td></tr><tr><td></td><td></td><td></td><td></td><td></td><td></td><td></td><td></td></tr><tr><td></td><td></td><td></td><td></td><td></td><td></td><td></td><td></td></tr><tr><td></td><td></td><td></td><td></td><td></td><td></td><td></td><td></td></tr><tr><td></td><td></td><td></td><td></td><td></td><td></td><td></td><td></td></tr><tr><td></td><td></td><td></td><td></td><td></td><td></td><td></td><td></td></tr><tr><td></td><td></td><td></td><td></td><td></td><td></td><td></td><td></td></tr><tr><td></td><td></td><td></td><td></td><td></td><td></td><td></td><td></td></tr></tbody></table></div> | | | CH00 | CH01 | CH02 | CH03 | CH04 | CH05 | | H00 | C | C | M | M | Y | Y | | H01 | K | K | M | M | C | C | | | | | | | | | | | | | | | | | | | | | | | | | | | | | | | | | | | | | | | | | | | | | | | | | | | | | | | | | | | | | | | | | | | | | | | | | | | | | | | | | |
| | CH00 | CH01 | CH02 | CH03 | CH04 | CH05 | | | | | | | | | | | | | | | | | | | | | | | | | | | | | | | | | | | | | | | | | | | | | | | | | | | | | | | | | | | | | | | | | | | | | | | | | | | | | | | | | | | | | | | | | | | | | | | | | | | | | | | |
| H00 | C | C | M | M | Y | Y | | | | | | | | | | | | | | | | | | | | | | | | | | | | | | | | | | | | | | | | | | | | | | | | | | | | | | | | | | | | | | | | | | | | | | | | | | | | | | | | | | | | | | | | | | | | | | | | | | | | | | | |
| H01 | K | K | M | M | C | C | | | | | | | | | | | | | | | | | | | | | | | | | | | | | | | | | | | | | | | | | | | | | | | | | | | | | | | | | | | | | | | | | | | | | | | | | | | | | | | | | | | | | | | | | | | | | | | | | | | | | | | |
| | | | | | | | | | | | | | | | | | | | | | | | | | | | | | | | | | | | | | | | | | | | | | | | | | | | | | | | | | | | | | | | | | | | | | | | | | | | | | | | | | | | | | | | | | | | | | | | | | | | | | | | | | | | | | |
| | | | | | | | | | | | | | | | | | | | | | | | | | | | | | | | | | | | | | | | | | | | | | | | | | | | | | | | | | | | | | | | | | | | | | | | | | | | | | | | | | | | | | | | | | | | | | | | | | | | | | | | | | | | | | |
| | | | | | | | | | | | | | | | | | | | | | | | | | | | | | | | | | | | | | | | | | | | | | | | | | | | | | | | | | | | | | | | | | | | | | | | | | | | | | | | | | | | | | | | | | | | | | | | | | | | | | | | | | | | | | |
| | | | | | | | | | | | | | | | | | | | | | | | | | | | | | | | | | | | | | | | | | | | | | | | | | | | | | | | | | | | | | | | | | | | | | | | | | | | | | | | | | | | | | | | | | | | | | | | | | | | | | | | | | | | | | |
| | | | | | | | | | | | | | | | | | | | | | | | | | | | | | | | | | | | | | | | | | | | | | | | | | | | | | | | | | | | | | | | | | | | | | | | | | | | | | | | | | | | | | | | | | | | | | | | | | | | | | | | | | | | | | |
| | | | | | | | | | | | | | | | | | | | | | | | | | | | | | | | | | | | | | | | | | | | | | | | | | | | | | | | | | | | | | | | | | | | | | | | | | | | | | | | | | | | | | | | | | | | | | | | | | | | | | | | | | | | | | |
| | | | | | | | | | | | | | | | | | | | | | | | | | | | | | | | | | | | | | | | | | | | | | | | | | | | | | | | | | | | | | | | | | | | | | | | | | | | | | | | | | | | | | | | | | | | | | | | | | | | | | | | | | | | | | |
| | | | | | | | | | | | | | | | | | | | | | | | | | | | | | | | | | | | | | | | | | | | | | | | | | | | | | | | | | | | | | | | | | | | | | | | | | | | | | | | | | | | | | | | | | | | | | | | | | | | | | | | | | | | | | |
| | | | | | | | | | | | | | | | | | | | | | | | | | | | | | | | | | | | | | | | | | | | | | | | | | | | | | | | | | | | | | | | | | | | | | | | | | | | | | | | | | | | | | | | | | | | | | | | | | | | | | | | | | | | | | |
| | | | | | | | | | | | | | | | | | | | | | | | | | | | | | | | | | | | | | | | | | | | | | | | | | | | | | | | | | | | | | | | | | | | | | | | | | | | | | | | | | | | | | | | | | | | | | | | | | | | | | | | | | | | | | |
| <div style="border: 1px solid black; padding: 5px;"><p style="text-align: center; margin: 0;">Position Offset</p><p>X-Offset: <input style="width: 80px;" type="text" value="180.00"/> mm Y-Offset: <input style="width: 80px;" type="text" value="10.00"/> mm</p></div> | | | | | | | | | | | | | | | | | | | | | | | | | | | | | | | | | | | | | | | | | | | | | | | | | | | | | | | | | | | | | | | | | | | | | | | | | | | | | | | | | | | | | | | | | | | | | | | | | | | | | | | | | | | | | |
| <div style="border: 1px solid black; padding: 5px;"><p style="text-align: center; margin: 0;">Acceleration Distance</p><p>X-Direction: <input style="width: 80px;" type="text" value="100"/> mm Y-Direction: <input style="width: 80px;" type="text" value="3"/> mm</p></div> | | | | | | | | | | | | | | | | | | | | | | | | | | | | | | | | | | | | | | | | | | | | | | | | | | | | | | | | | | | | | | | | | | | | | | | | | | | | | | | | | | | | | | | | | | | | | | | | | | | | | | | | | | | | | |
| <div style="border: 1px solid black; display: inline-block; padding: 5px 20px; margin: 0;">Apply</div> | | | | | | | | | | | | | | | | | | | | | | | | | | | | | | | | | | | | | | | | | | | | | | | | | | | | | | | | | | | | | | | | | | | | | | | | | | | | | | | | | | | | | | | | | | | | | | | | | | | | | | | | | | | | | |

八， 系统菜单 System menu:



读取闪存参数和写入闪存参数功能暂未开放。请勿点击

Read Flash Parameters and Write Flash Parameters still not available. Please don't click.

加密狗管理，当使用分期加密狗时，到期需要写入密码才能继续使用

Dongle management, when using the staging dongle, you need to write a password to continue using it.

九，常见故障处理 Frequent Trouble-Shooting:

1、开机无动作 No action when booting

- (1)、数据线连接有问题，检查光纤线顺序是否对应。（主板显示A）
 - (2)、检查电机信号线是否连接正确，线序是否正确，X,Y 电机信号线是否接反
 - (3)、检查电机驱动器是否正常
 - (4)、确认开机动作设置是否正确，重新导入参数或固件
 - (5)、检查板卡电源，观察 D71、D72、D74，D80 指示灯是否亮
- (1) There is a problem with the cable connection. Check if the order of the fiber cables corresponds. (Main board display A)
- (2) Check if the motor signal line is connected correctly, whether the X, Y motor signal line are reversed.
- (3) Check if the motor driver is normal
- (4) Confirm that the boot action settings are correct, re-import parameters or firmware
- (5) Check the power of the board, whether the D71, D72, D74, D80 light are on.

2、开机 X 电机只向一个方向移动并不停止 After booting, X motor only moves to the left and doesn't stop.

- (1)、电机信号线有问题，只接 3 根数据线、线路之间有短路，信号线不通等
 - (2)、感应器坏掉，手动挡住感应器，确认限位感应器是否正常
 - (3)、板卡开机动作设置限位极性与实际使用极性不对应，（此时可以通过手动挡住感应器来判断，如果挡住感应器作正常，那肯定是设置极性反了）
 - (4)、电器驱动器故障，更换驱动器
- (1) There is a problem with the motor signal line. Only 3 data cables are connected, there is a short circuit between the lines, and the signal lines are not connected.
- (2) The sensor is broken, manually block the sensor, confirm whether the limit sensor is normal
- (3) The board power-on action setting limit polarity does not correspond to the actual use polarity, (this can be judged manually blocking the sensor, if the sensor is blocked, the polarity is reversed)
- (4) Electrical drive failure, replace the drive

3、软件不联机 The software is offline

- (1)、确认开机动作是否完成。
 - (2)、检查电脑是否识别到板卡驱动，如没有，需重新安装驱动
 - (3)、电脑是否插了加密狗，软件左上角是否显示未检测到加密狗，重新插拔加密狗
 - (4)、软件版本不对应，软件 USB 类型设置不对应
- (1) Confirm whether the booting action is completed.
- (2) Check if the computer recognizes the board driver. If not, reinstall the driver.
- (3) Whether the computer has a dongle inserted, whether the dongle is not detected in the upper left corner of the software, and the dongle is re-plugged.
- (4) The software version does not correspond, the software USB type setting does not correspond

4、软件联机之后小车一直左移 After the software is online, the carriage has been shifted to the left.

- (1)、软件读取不到光栅值，软件左下角小车位置一直显示 0，检查光栅解码器是否正常，线路连接是否有问题
 - (2)、软件读取光栅值反，左下角小车位置一直显示 负数，更改光栅极性，或者调换光栅解码器的A、B 线序
 - (3)、机器原点方向设置错误
- (1) The software cannot read the encoder value, the carriage position in the lower left corner of the software is always displayed 0, check whether the encoder reader is normal, there is a problem with the cable connection.
- (2) The software reads the encoder value inverse, the carriage position in the lower left corner always shows a negat number, change the grating polarity, or change the A, B line sequence of encoder reader.
- (3) Machine origin direction setting error

5、喷头无闪喷 Flash is not working

- (1)、板卡逻辑，软件版本，喷头类型不对应
 - (2)、检查喷头排线是否插好，16PI 数据排线是否插对
 - (3)、板卡损坏，换板卡测试，哪个板卡
 - (5)、软件闪喷区域设置不对
- (1) Board logic, software version, nozzle type does not correspond
- (2) Check whether the nozzle cable is plugged in, and whether the 16PI data cable is plugged in.

- (3), Board damage, board change test,
- (5), The software flash spray area is set incorrectly

6、打印不了状态图 **Can not print nozzle test**

- (1)、打印状态图无动作，软件内 PRN 文件不对，联系儒彩技术支持解决
 - (2)、软件提示 1 PASS 数据异常，软件版本和板卡不对应
 - (3)、提示 Y DPI 太小，软件配置文件不对应，状态图与软件设置不对，一般是单双头，喷头类型不对应等
 - (4)、软件提示数据交织错误，软件设置白墨通道数不对；二次解密软件版本不对。
- (1), The print test has no action, the PRN file in the software is incorrect, contact the SinoColor technical support to so
(2), Software prompt 1 PASS data is abnormal, the software version and the board do not correspond
(3), Prompt Y DPI is too small, the software configuration file does not correspond, the state diagram and software settings are wrong, generally single and double head, nozzle type does not correspond, etc.
(4), The software prompts data interleaving error, the software sets the number of white ink channels is incorrect; the secondary decryption software version is wrong.

7、喷头状态图缺列 **Some lines of nozzle test missing completely.**

- (1)、检查喷头排线是否插好，重新插拔喷头数据线
 - (2)、软件系统维护，基础设置界面，通道是否关闭
 - (3)、检查软件墨序，是否按照本说明书说明装
 - (4)、多抽下墨，是否喷头没抽出来墨，清洗液冲下喷头，确认喷头是否堵塞
- (1) Check whether the nozzle cable is plugged in, re-plug the nozzle data cable
(2), Software system maintenance, base settings interface, whether the channel is closed
(3) Check the software ink sequence, according to the instructions in this manual, especially the DX7 head, ensure the ink sequence of the flash, the adjacent two columns are the same color.
(4), Draw more ink, whether the head does not draw ink, the cleaning liquid washes off the nozzle, confirm whether the nozzle is blocked

8、打印喷头状态图乱喷 **Nozzle test error**

- (1)、检查软件、板卡、喷头类型是否对应
 - (2)、重插喷头排线，检查下 29pi 长数据线，是否插好，是否有歪斜
 - (3)、更换一块喷头小板，更换喷头排线试试
 - (4)、更换喷头测试
- (1) Check whether the software, board, and nozzle type correspond
(2), Re-insert the nozzle cable, check the next 29pi long data cable, whether it is plugged in, whether there is skew
(3), Replace a head board, try to replace the nozzle cable
(4), Replace head

9、打图断线 **Nozzle test not good. Seems many nozzles are not printing**

- (1)、喷头缺针较多，清洗喷头，保证喷头最大可能的少缺针
 - (2)、打多 PASS，PASS 数越多，羽化越大，效果会有改善
 - (3)、开启加强羽化，会对拉丝现象有改善，速度会有一定下降
- (1), The head lacks more pins, cleaning the nozzle, to ensure that the head with max pins
(2), Print high PASS, the more PASS number, the greater the eclosion, the effect will be improved
(3), Open the enhance eclosion, will improve the drawing phenomenon, the speed will be reduced

10、打图深浅道，露白 **Print with ligh or dark color lines. White out**

- (1)、检查喷头安装是否与平台水平，
 - (2)、步进，垂直、双向是否校准好
 - (3)、开启加强羽化，效果会有明显改善
- (1) Check whether the head installation is level with the platform.
(2), Step, vertical, Bi-Dir calibration is good
(3), Open the enhance eclosion, the effect will be better

11、读取 1PASS 数据错误，写入数据量不相等，设置微喷状态错误 **1PASS data error, the amou of written data is not equal, set the micro-injection status error**

- (1)、USB 接口或数据线有问题，更换数据线或更换电脑接口尝试
- (2)、16pi 长数据线有问题，重插，或者更换
- (3)、小车打印速度超过喷头喷打频率，降低打印速度
- (4)、更换板卡测试

- (1) There is a problem with the USB interface or the data cable. Try replacing the data cable or replacing the computer interface.
- (2), 16pi long data cable has a problem, re-plug, or replace
- (3), The printing speed of the carriage exceeds the spraying frequency of the head, make the speed slower
- (4), Replace the board



Shanghai Rucai high-quality and cost-effective printing equipment, Recruitment dealers around the country, excellent conditions, welcome to contact us

Tel: 021-52063365 Mobile: 18939965809 Contact: Mr. Cai
Address: No. 318, Majiazhai Road, Fengxian District, Shanghai