

Epson Printhead Series UV Flatbed Printer

250x130CM 宽幅UV平板打印机

Epson i3200-U Printheads
爱普生 i3200-U喷头

Variable Dot
可变墨滴

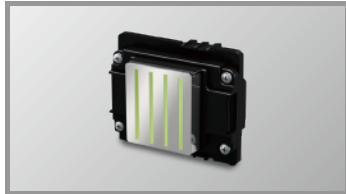
Negative Pressure System
负压系统

White & Varnish
白色和光油



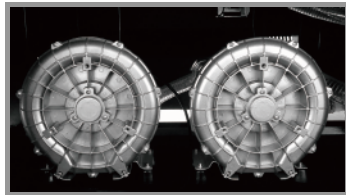
PRECISIONCORE
PRINTHEAD
powered by EPSON

● Features 特点



Latest Epson Industrial Printhead i3200-U Equipped. Focus on super fast speed printing.

最新的爱普生i3200-U工业级喷头。专注高速打印



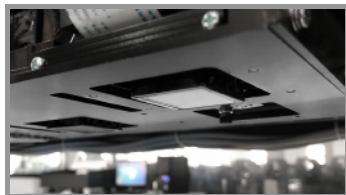
Double built-in high-power independent vacuum pump. Guarantee the powerful suction.

内置独立双高功率抽风机。确保吸力强劲



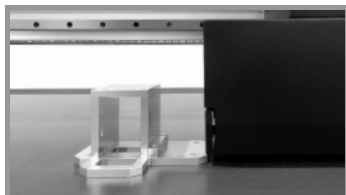
Two advanced separate negative pressure systems. Simply and effectively ensure the continuous ink flow, and easy maintenance for multi-heads equipment.

配置高级的负压系统。稳定供墨，简化多头设备维护。



Automatic media height detecting system is equipped, provide great help for setting the proper print height.

标配自动测高功能



Anti-collision system is equipped to protect the printhead and carriage all the time.

贴心防撞系统设计，保护喷头及机架

- ★ The high precision machine frame ensures perfect print resolution
高精度的机器框架确保完美的打印分辨率
- ★ X axis's gear fixation components are processed with one-time molding technology
X轴的齿轮固定部件采用一次成型技术进行加工，以确保最高分辨率标准
- ★ X axis is equipped with dual guide rail which ensures smooth movement of carriage
X轴配备双导轨，确保小车的平稳运动
- ★ Y axis is using screw drive transmission mode
Y轴采用丝杠传动方式，比皮带传动精度高得多



● Specification 参数

Model No.	型号	FB-2513S
Printhead	喷头	2/3/4 pcs Epson i3200-U
Resolution	精度	Max 2400 dpi
Media 耗材	Thickness 厚度	Max 12 cm
	Size 尺寸	2500 × 1300 mm
	Types 种类	Glass, Acrylic, Ceramic, Metal, Paper, Wood, Leather, PVC, PP, PE, PTFE Etc. 玻璃, 亚克力, 陶瓷, 金属, 纸, 木板, 皮革, PVC, PP, PE, PTFE等
Speed 速度	Draft 草图	50 sqm/h (CMYK, 4 Heads)
	Production 标准	32 sqm/h (CMYK, 4 Heads)
	Quality 精细	23sqm/h (CMYK, 4 Heads)
Ink 墨水	Type 墨水	UV Ink
	Color 颜色	CMYK/CMYK + W/CMYK + W + V
	Capacity 墨瓶	500 ml
	Dry System 干燥	UV-LED Light System
PC Operation System 系统		Windows 7/XP/10
Environment 环境		Temperature: 20-28 °C, Humidity: 40%-60%
Rip Software 软件		Maintop (Standard) / Photoprint (Optional)
Image Format 图片格式		TIFF, JPEG, EPS, PDF...
Power 电源		Max 3.6KW, AC 50/60Hz, 220V(±10%)>12A
Size 尺寸	Machine 机器	L4120 × W2000 × H1400 mm
	Packing 包装	L4220 × W2100 × H1610 mm
Weight 重量	Machine 机器	850 KG
	Packing 包装	1000 KG

Specifications are subject to change without notice. 以上参数可能随机器版本改变，请以厂家最新数据为准。