

Direct Textile Printer

for Flag Polyester/Cotton Material

旗帜布/纯棉直喷一体机

Epson Official i1600/i3200 Heads

爱普生i1600/i3200喷头

1.8m / 3.2m

1.8米 / 3.2米

Integrated Design

一体式设计

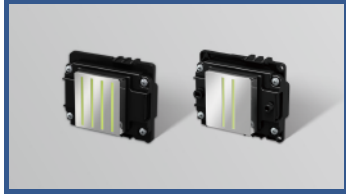
Professional

专业



Direct Textile Printer | FP-740 & FP-I260

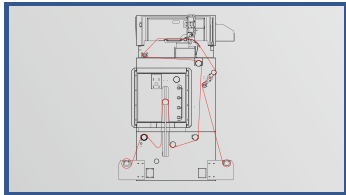
● Features



Epson PrecisionCore Printheads
Equipped with Epson i1600/i3200 print-head, powered by Epson PrecisionCore technology. Born for fast speed and long-term running.



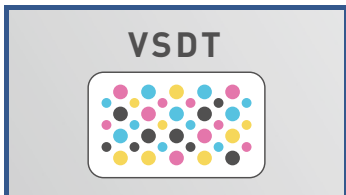
Integrated Design
The professional integrated design of printer part and heater part guaranteed the high accuracy of media stepping



Tension Type Media Feeding and Take-up System
Apply to material with different elasticity.



Anti-collision system
Printer will automatically stop when the carriage hit any unexpected object. And support to continue printing. Reduce the material waste.



Variable Sized Droplet Technology
Ensure the smooth color gradations and high quality output.



● Specification

Model No.		产品型号	FP-740D (Pro)	FP-740S (Pro)	FP-1260S (Pro)
Printhead 喷头	Type	喷头类型	2/4 Epson i1600	2/4 Epson i3200	2/4 Epson i3200
	Nozzles	喷嘴数量	1600 Nozzles Per Head	3200 Nozzles Per Head	3200 Nozzles Per Head
	Height	高度调节	2-8mm Above Media Adjustable		
Max Printing Width		打印尺寸	1.8m	1.8m	3.2m
Resolution (dpi)		打印精度	2400 dpi		
Media Types		适应耗材	Polyester (For flag, display board, light box, etc) 涤纶(用于旗帜、展示板、灯箱等)		
Ink 墨水	Type	墨水类型	Dye Sublimation Ink		
	Color	墨水颜色	CMYK		
	Droplet	墨滴大小	1.5 – 21pl Variable		
Speed (4 heads) 速度	Draft	标准模式	108 sqm/h	120 sqm/h	150 sqm/h
	Production	精细模式	54 sqm/h	60 sqm/h	75 sqm/h
	Quality	照片模式	36 sqm/h	40 sqm/h	50 sqm/h
Feed & take up		收放布系统	Automatic Tension Type Media Feeding & Take-up System (Standard)		
Cleaning		清洗系统	Automatic Cleaning, Anti-Clogging Flash Function & Capping System 自动清洗, 闪喷, 封喷头		
Fabric Drying System		干燥系统	Infrared Heater		
Environment		工作环境	Temperature: 20-28 ℃, Humidity: 40%-60%		
Rip Software		图像处理	Maintop (Standard) / FlexiPRINT (Optional)		
Control Software		控制软件	SinoColor Print Console		
Interface		输入接口	USB 3.0		
Operation System		操作系统	Windows 7 / XP / 10		
Power		电源消耗	Machine 50 / 60HZ, 110 / 220V		

Specifications are subject to change without notice. 以上参数可能随机器版本改变, 请以厂家最新数据为准。